

RIVESTIMENTI

UPHOLSTERY/ REVÊTEMENTS

LAS[®]

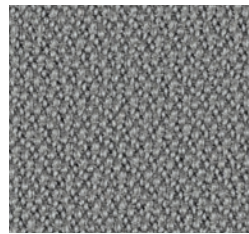
CAT_A

POLI

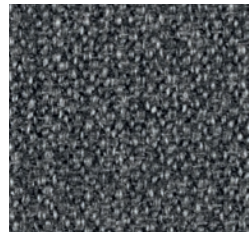
100% Polipropilene F.R.
Peso: 250 gr/m²
Martindale 50.000 cicli
Ignifugo classe 1

100% Polypropylene F.R.
Weight: 250 gr/m²
Martindale 50.000 turns
Fire-retardant class 1 (one)

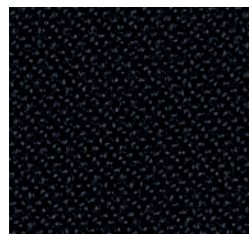
100% Polypropylene F.R.
Poids: 250 gr/m²
Martindale 50.000 cycles
Ignifuge classe 1



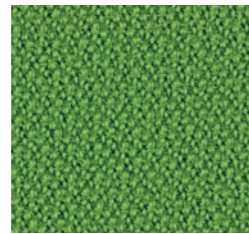
475 - Grigio
Grey | Gris



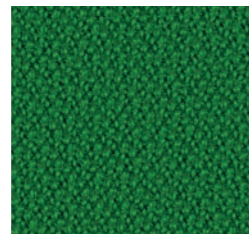
476 - Grigio Melange
Melange Grey | Gris Mélange



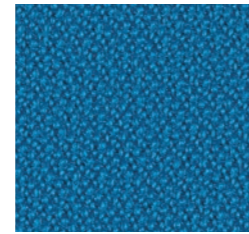
477 - Nero
Black | Noir



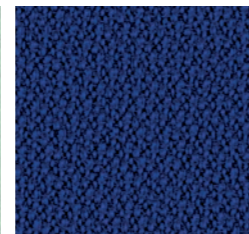
478 - Verde Chiaro
Light Green | Vert Clair



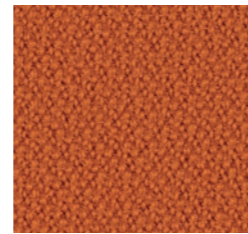
479 - Verde
Green | Vert



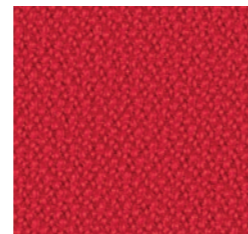
480 - Azzurro
Azure | Azur



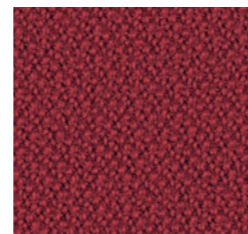
481 - Blu
Blue | Bleu



482 - Arancio
Orange | Orange



483 - Rosso
Red | Rouge



484 - Bordeaux
Bordeaux | Bordeaux

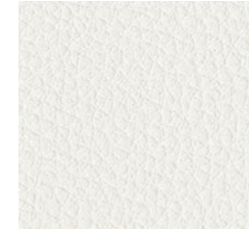
CAT_B

ECO-PELLE

Composizione fibrosa:
65% Poliestere
35% Cotone
Composizione globale:
85% PVC
10% Poliestere
5% Cotone
Peso: 600 gr/m²
Martindale 51.200 cicli
Ignifugo classe 1

Fibrous composition
65% Polyester
35% Cotton
Global composition:
85% PVC
10% Polyester
5% Cotton
Weight: 600 gr/m²
Martindale 51.200 turns
Fire-retardant class 1 (one)

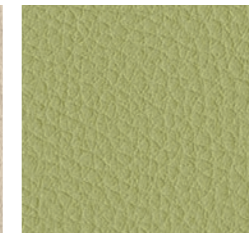
Composition fibreuse:
65% Polyester
35% Coton
Composition globale:
85% PVC
10% Polyester
5% Coton
Poids: 600 gr/m²
Martindale 51.200 cycles
Ignifuge classe 1



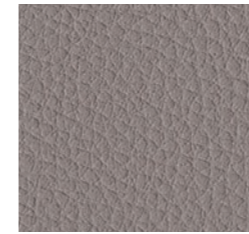
503 - Bianco
White | Blanc



507 - Avorio
Ivory | Ivoire



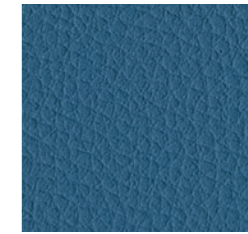
511 - Verde Acido
Acid Green | Vert Acide



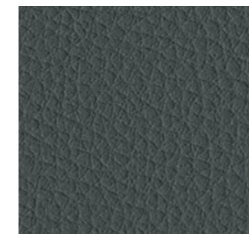
504 - Grigio
Grey | Gris



508 - Tabacco
Tobacco | Tabac



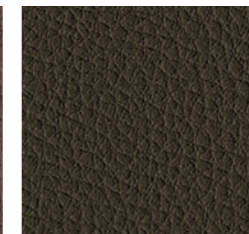
513 - Avio
Navy Blue | Bleu Aviateur



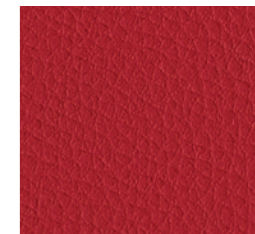
505 - Ardesia
Slate | Ardoise



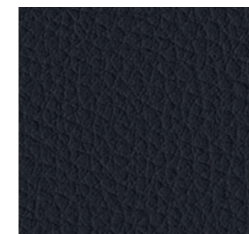
509 - Marrone
Brown | Marron



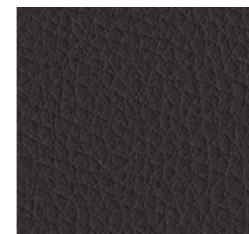
512 - Muschio
Moss Green | Vert Mousse



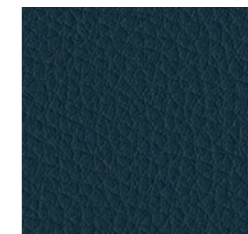
516 - Rosso
Red | Rouge



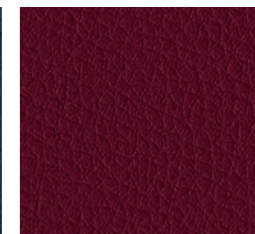
506 - Nero
Black | Noir



510 - Testa di Moro
Dark Brown | Marron Foncé



514 - Blu
Blue | Bleu



517 - Granata
Garnet | Grenat

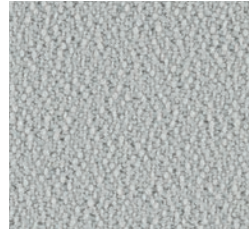
CAT_B

CREPE

100% Poliestere
FR-TREVIRA CS
Peso: 330 gr/m²
Martindale 100.000 cicli
Ignifugo classe 1

100% Polyester
FR-TREVIRA CS
Weight: 330 gr/m²
Martindale 100.000 turns
Fire-retardant class 1 (one)

100% Polyester
FR-TREVIRA CS
Poids: 330 gr/m²
Martindale 100.000 cycles
Ignifuge classe 1



522 - Grigio Perla
Light Grey | Gris Clair



525 - Avorio
Ivory | Ivoire



523 - Grigio Scuro
Dark Grey | Gris Foncé



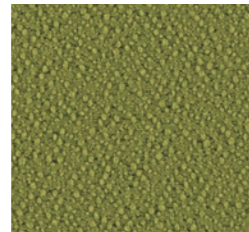
526 - Nocciola
Hazel | Noisette



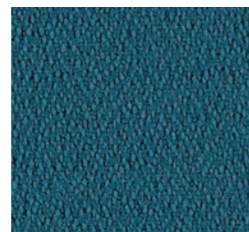
524 - Nero
Black | Noir



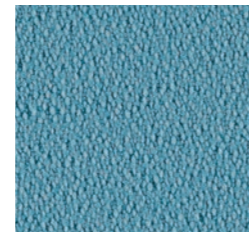
527 - Malto
Malt | Malt



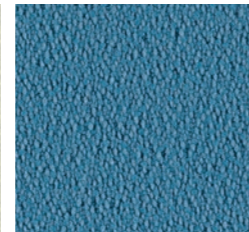
528 - Verde Acido
Acid Green | Vert Acide



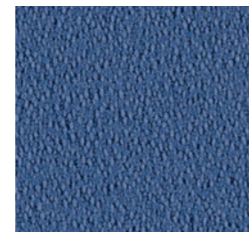
529 - Petrolio
Petroleum | Huile



530 - Artico
Arctic | Arctique



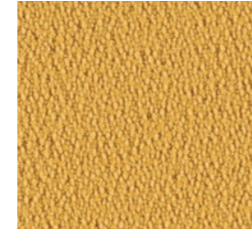
531 - Celeste
Light Blue | Bleu Clair



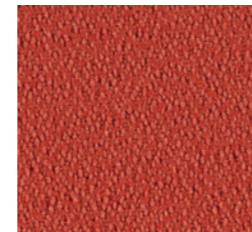
532 - Cobalto
Cobalt | Cobalt



533 - Blu
Blue | Bleu



534 - Giallo
Yellow | Jaune



535 - Arancio
Orange | Orange



536 - Vinaccio
Wine Red | Rouge Vin



537 - Rosso
Red | Rouge



538 - Prugna
Plum | Prune

CAT_D

STRETCH

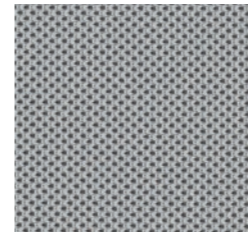
100% Poliestere
FR RICICLATO
Peso: 340 gr/m²
Martindale 50.000 cicli
Ignifugo classe 1

100% Polyester FR
RECYCLED
Weight: 340 gr/m²
Martindale 50.000 turns
Fire-retardant class 1 (one)

100% Polyester
FR RECYCLÉ
Poids: 340 gr/m²
Martindale 50.000 cycles
Ignifuge classe 1



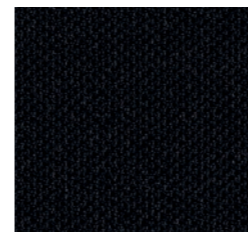
585 - Avorio
Ivory | Ivoire



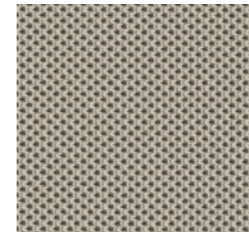
586 - Grigio
Grey | Gris



587 - Antracite
Anthracite | Anthracite



588 - Nero
Black | Noir



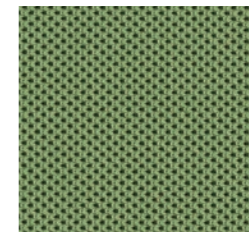
589 - Tortora
Grey Beige | Gris Tourterelle



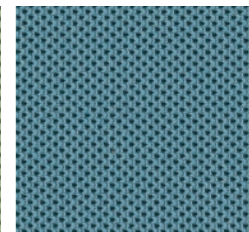
590 - Marrone
Brown | Marron



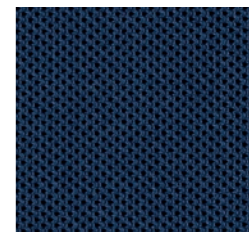
591 - Verde Acido
Acid Green | Vert Acide



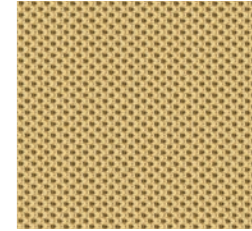
592 - Verde Bosco
Wood Green | Vert Forêt



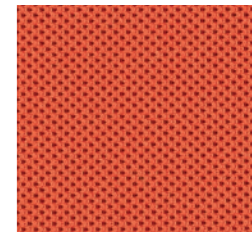
593 - Azzurro Sky
Sky Blue | Bleu Sky



594 - Blu
Blue | Bleu



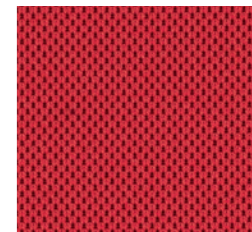
595 - Giallo Fresia
Freesia Yellow | Jaune Freesia



596 - Arancio
Orange | Orange



597 - Rosso
Red | Rouge



598 - Amaranto
Amaranth | Amarante

CAT_D

MELANGE

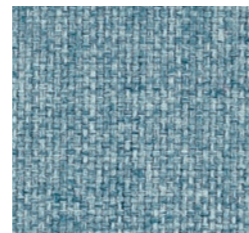
100% Poliestere
FR RICICLATO
Peso: 340 gr/m²
Martindale 50.000 cicli
Ignifugo classe 1

100% Polyester
FR RECYCLED
Weight: 340 gr/m²
Martindale 50.000 turns
Fire-retardant class 1 (one)

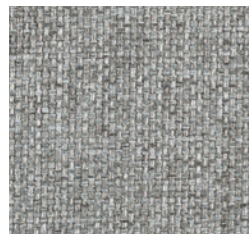
100% Polyester
FR RECYCLÉ
Poids: 340 gr/m²
Martindale 50.000 cycles
Ignifuge classe 1



603 - Cenere
Ash | Cendre



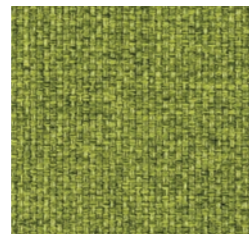
611 - Artico
Arctic | Arctique



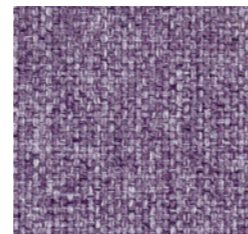
604 - Grigio
Grey | Gris



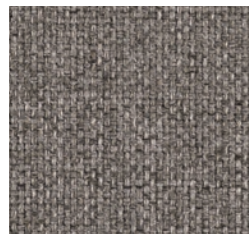
606 - Tortora
Grey Beige | Gris Tourterelle



608 - Verde Acido
Acid Green | Vert Acide



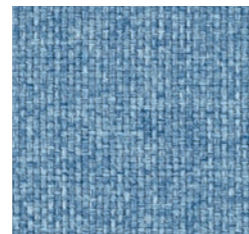
614 - Petunia
Petunia | Pétunia



605 - Fumo
Smoke | Fumée



609 - Muschio
Moss Green | Vert Mousse



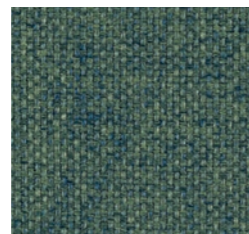
612 - Azzurro
Azure | Azur



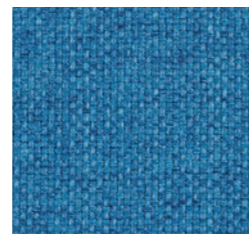
615 - Ribes
Currant | Groseille



607 - Nocciola
Hazel | Noisette



610 - Verdone
Dark Green | Vert Foncé



613 - Cobalto
Cobalt | Cobalt



616 - Granata
Garnet | Grenat

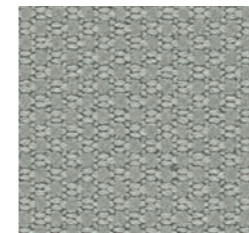
CAT_D

TREVI

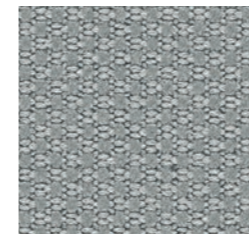
100% Poliestere FR
TREVIRA CS
Peso: 450 gr/m²
Martindale 70.000 cicli
Ignifugo classe 1

100% Polyester FR
TREVIRA CS
Weight: 450 gr/m²
Martindale 70.000 turns
Fire-retardant class 1 (one)

100% Polyester FR
TREVIRA CS
Poids: 450 gr/m²
Martindale 70.000 cycles
Ignifuge classe 1



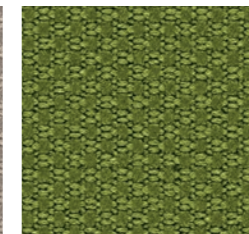
621 - Grigio
Grey | Gris



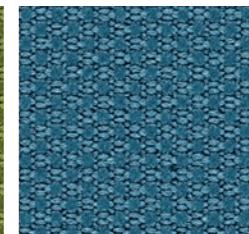
622 - Porfido
Porphyry | Porphyre



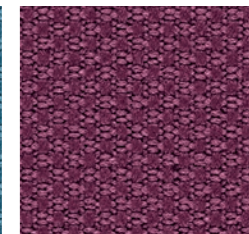
625 - Tortora
Grey Beige | Gris Tourterelle



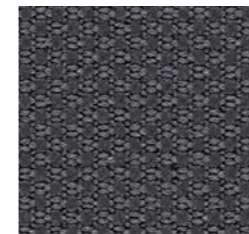
628 - Verde Acido
Acid Green | Vert Acide



630 - Celeste
Light Blue | Bleu Clair



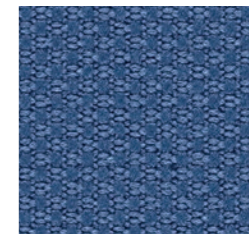
635 - Petunia
Petunia | Pétunia



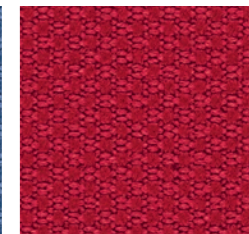
623 - Grigio Scuro
Dark Grey | Gris Foncé



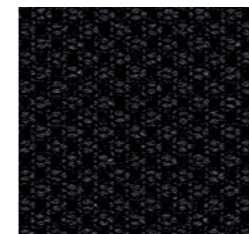
626 - Nocciola
Hazel | Noisette



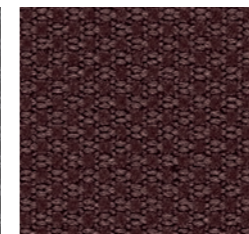
631 - Pervinca
Periwinkle | Pervenche



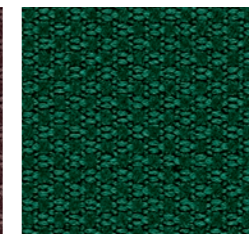
636 - Rosso
Red | Rouge



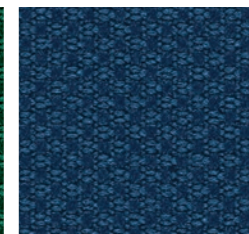
624 - Nero
Black | Noir



627 - Marrone
Brown | Marron



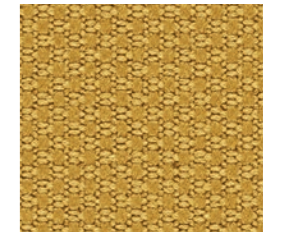
629 - Petrolio
Petroleum | Pétrole



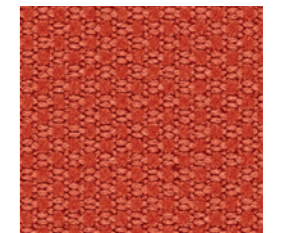
632 - Blu
Blue | Bleu



637 - Amaranto
Amaranth | Amarante



633 - Odra
Ocher | Ocre



634 - Mattone
Brick Red | Rouge Brique

La stampa ha carattere indicativo e potrebbe scostarsi leggermente dalla realtà | The printout is an example and may differ slightly from the actual product | L'impression a caractère indicatif et pourrait différer de la réalité

CAT_E

LANA

75% Lana
25% Poliammide
Peso: 335 gr/m²
Martindale 100.000 cicli

75% Wool
25% Polyamide
Weight: 335 gr/m²
Martindale 100.000 turns

75% Laine
25% Polyamide
Poids: 335 gr/m²
Martindale 100.000 cycles



649 - Artico
Arctic | Arctique



642 - Grigio Chiaro
Light Grey | Gris Clair



645 - Tortora
Grey Beige | Gris Tourterelle



650 - Malibú
Malibu | Malibu



653 - Ruggine
Russet | Rouille



643 - Grigio Scuro
Dark Grey | Gris Foncé



647 - Verde Acido
Acid Green | Vert Acide



651 - Pervinca
Periwinkle | Pervenche



654 - Mattone
Brick Red | Rouge Brique



646 - Marrone
Brown | Marron



648 - Muschio
Moss Green | Vert Mousse



652 - Avio
Navy Blue | Bleu Aviateur



655 - Fuoco
Fire Red | Rouge Feu



644 - Fumo
Smoke | Fumée

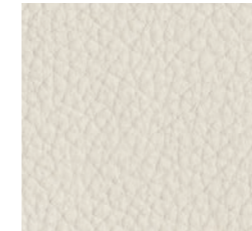
CAT_E

CRAZY by Flukso

80% PVC
18% Poliestere
2% Fibra poliuretanic
Peso: 600 gr/m²
Abrasion 50.000 cicli
Ignifugo classe 1

80% PVC
18% Polyester
2% Polyurethane fiber
Weight: 600 gr/m²
Abrasion 50.000 turns
Fire-retardant class 1 (one)

80% PVC
18% Polyester
2% Fibres de polyuréthane
Poids: 600 gr/m²
Abrasion 50.000 cycles
Ignifuge classe 1



660 - Bianco
White | Blanc



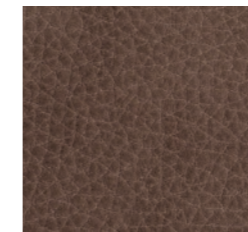
661 - Grigio
Grey | Gris



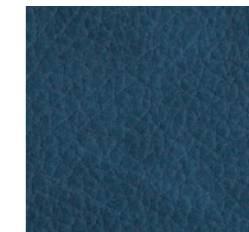
663 - Beige
Beige | Beige



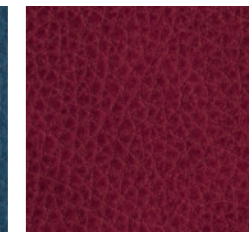
665 - Oliva
Olive | Olive



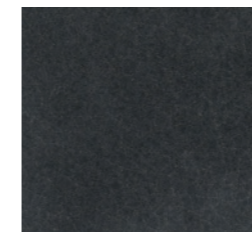
664 - Tabacco
Tobacco | Tabac



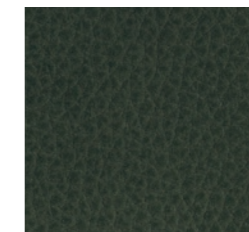
667 - Navy
Navy Blue | Bleu Aviateur



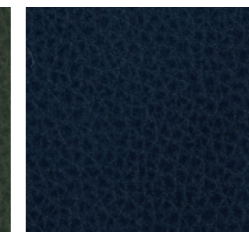
669 - Rosso
Red | Rouge



662 - Grafite
Graphite | Graphite



666 - Alga
Seaweed | Algue



668 - Blu
Blue | Bleu



670 - Vinaccio
Wine Red | Rouge Vin

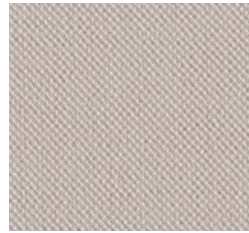
CAT_F

TAYLOR F.R. by Flukso

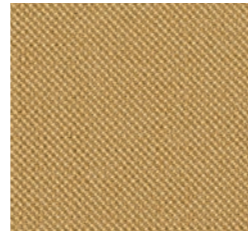
100% Poliestere
Peso: 330 gr/m²
Martindale 60.000 cicli
Ignifugo classe 1

100% Polyester
Weight: 330 gr/m²
Martindale 60.000 turns
Fire-retardant class 1 (one)

100% Polyester
Poids: 330 gr/m²
Martindale 60.000 cycles
Ignifuge classe 1



689 - Marna
Marl | Marne



699 - Odra
Ocher | Ocre



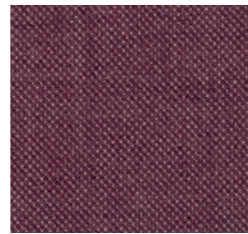
690 - Grigio Scuro
Dark Grey | Gris Foncé



693 - Tortora
Grey Beige | Gris Tourterelle



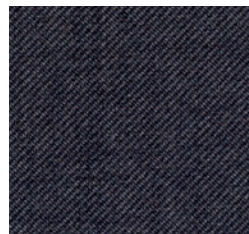
695 - Oliva
Olive | Olive



700 - Mattone
Brick Red | Rouge Brique



701 - Prugna
Plum | Prune



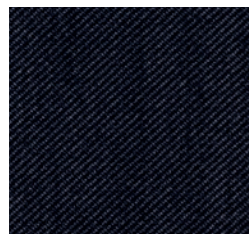
691 - Grafite
Graphite | Graphite



697 - Avio
Navy Blue | Bleu Aviateur



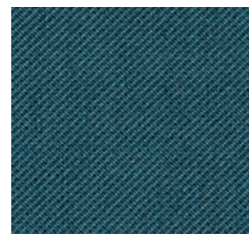
702 - Rosso
Red | Rouge



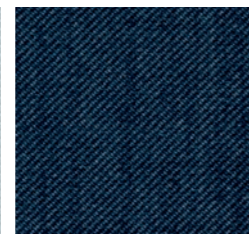
692 - Nero
Black | Noir



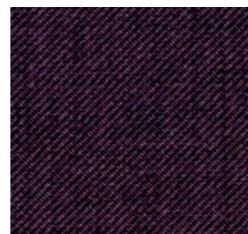
694 - Tabacco
Tobacco | Tabac



696 - Petrolio
Petroleum | Pétrole



698 - Blu Notte
Night Blue | Bleu Nuit



703 - Vinaccio
Wine Red | Rouge Vin

CHAIRS_ 012

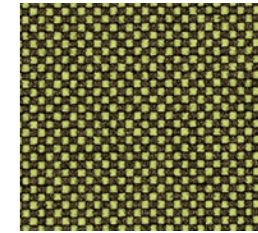
CAT_G

GO CHECK by Gabriel

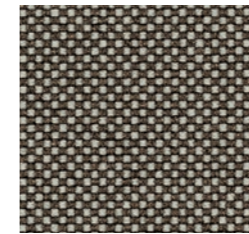
100% Trevira CS
Peso: 310 gr/m²
Martindale 80.000 cicli
Ignifugo classe 1

100% Trevira CS
Weight: 310 gr/m²
Martindale 80.000 turns
Fire-retardant class 1 (one)

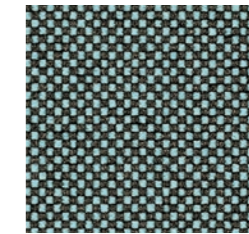
100% Trevira CS
Poids: 310 gr/m²
Martindale 80.000 cycles
Ignifuge classe 1



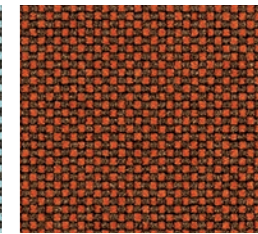
748 - Giallo
Yellow | Jaune



738 - Beige
Beige | Beige



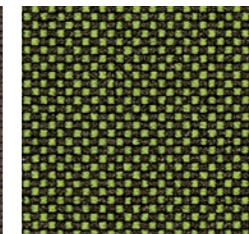
744 - Azzurro
Azure | Azur



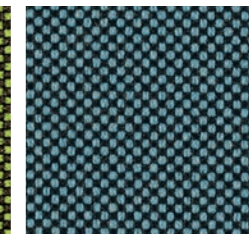
749 - Arancio
Orange | Orange



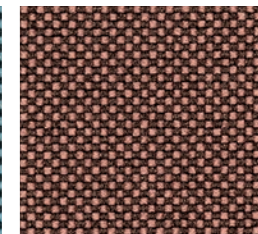
739 - Fango
Mud | Boue



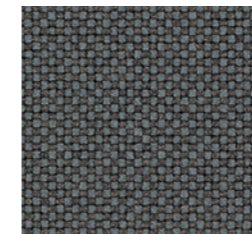
741 - Verde
Green | Vert



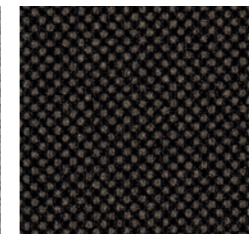
745 - Turchese
Turquoise | Turquoise



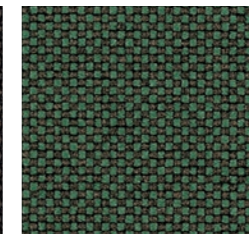
750 - Pesca
Peach | Pêche



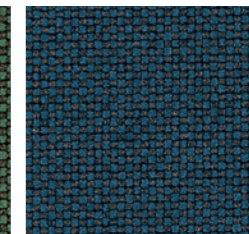
736 - Grigio
Grey | Gris



740 - Cacao
Cocoa | Cacao



742 - Prato
Lawn | Pelouse



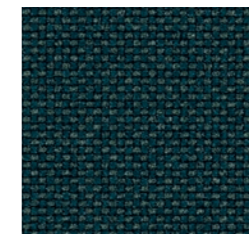
746 - Mare
Sea | Mer



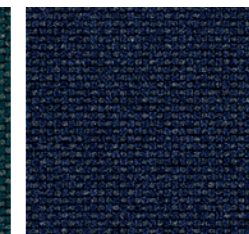
751 - Rosso
Red | Rouge



737 - Nero
Black | Noir



743 - Bottiglia
Bottle | Bouteille



747 - Blu
Blue | Bleu



752 - Amaranto
Amaranth | Amarante

CHAIRS_ 013

La stampa ha carattere indicativo e potrebbe scostarsi leggermente dalla realtà | L'impression a caractère indicatif et pourrait différer de la réalité
The printout is an example and may differ slightly from the actual product |

CAT_G

RUNNER by Gabriel

100% Poliestere
Peso: 319 gr/m²
Martindale 70.000 cicli
Ignifugo classe 1

100% Polyester
Weight: 319 gr/m²
Martindale 70.000 turns
Fire-retardant class 1 (one)

100% Polyester
Poids: 319 gr/m²
Martindale 70.000 cycles
Ignifuge classe 1



757 - Bianco
White | Blanc



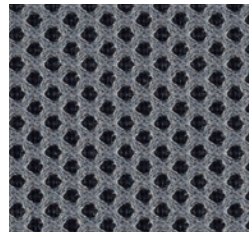
COD.
761 - Beige
Beige | Beige



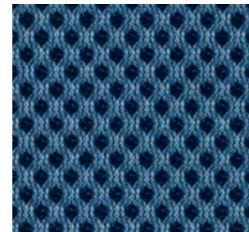
COD.
763 - Verde
Green | Vert



COD.
767 - Arancio
Orange | Orange



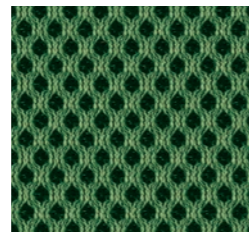
758 - Acciaio
Steel | Acier



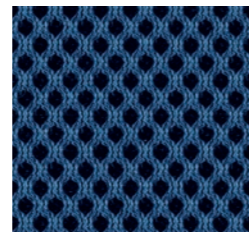
765 - Turchese
Turquoise | Turquoise



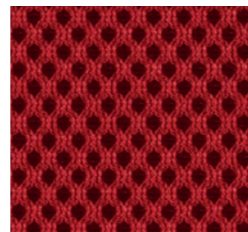
759 - Grafite
Graphite | Graphite



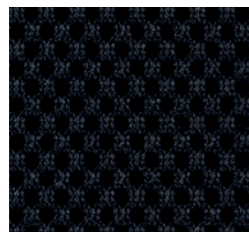
764 - Prato
Lawn | Pelouse



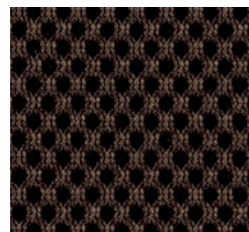
766 - Mare
Sea | Mer



768 - Rosso
Red | Rouge



760 - Nero
Black | Noir



762 - Marrone
Brown | Marron

CAT_H

PELLE

100% Pelle Bovina,
smerigliata e stampata.
Spessore 0,8 - 1,0 mm.
Eventuali imperfezioni,
graffi e cicatrici presenti
nella pelle non devono
essere considerati difetti,
ma pregi e caratteristiche
di garanzia e autenticità
della vera pelle.

100% cowhide,
sanded and printed.
Thickness 0.8 - 1.0 mm.
Possible leather scratches
and marks are not to be
considered imperfections but
a guarantee of its quality and
authenticity.

100% cuire de bovins,
poncé et imprimé.
Épaisseur: 0,8 - 1,0 mm.
Les éventuelles imperfections,
égratignures ou cicatrices
présentes dans le cuir ne
sont pas des défauts, mais
des marques naturelles, une
garantie de l'authenticité
du vraicuir.



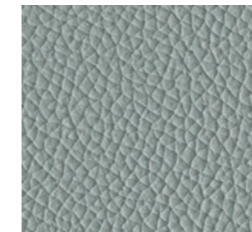
773 - Bianco
White | Blanc



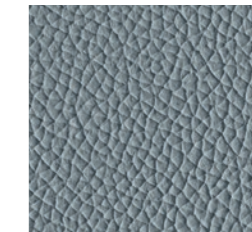
777 - Latte
Milk | Lait



787 - Ananas
Pineapple | Ananas



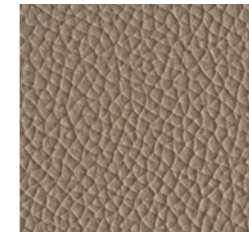
774 - Acqua
Water | Eau



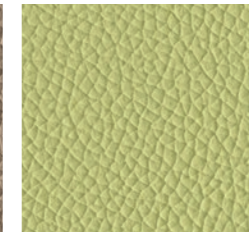
784 - Piombo
Lead | Plomb



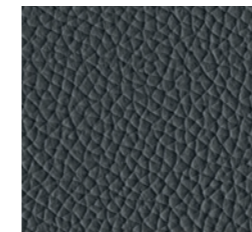
788 - Arancio
Orange | Orange



778 - Pietra
Stone | Pierre



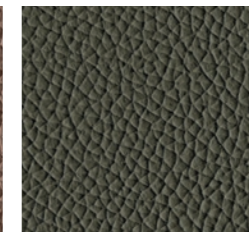
781 - Lime
Lime | Lime



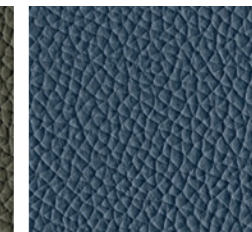
775 - Ardesia
Slate | Ardoise



779 - Fango
Mud | Boue



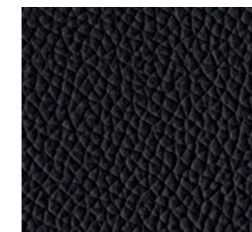
782 - Muschio
Moss Green | Vert Mousse



785 - Blu Notte
Night Blue | Bleu Nuit



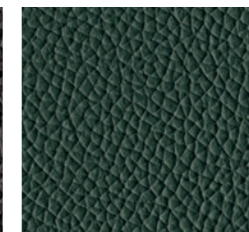
789 - Rosso
Red | Rouge



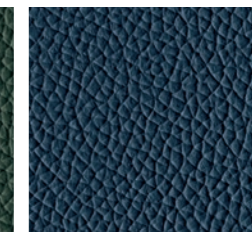
776 - Nero
Black | Noir



780 - Testa di Moro
Dark Brown | Marron Foncé



783 - Verdone
Dark Green | Vert Foncé



786 - Oceano
Ocean | Océan

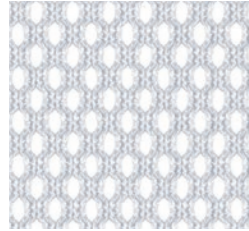


790 - Granata
Garnet | Grenat

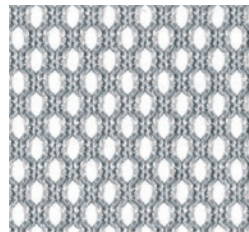
RETE_ R1

×

RETE ROUND



301 - Bianco
White | Blanc



302 - Grigio
Grey | Gris



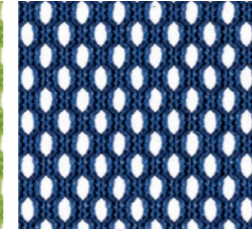
303 - Nero
Black | Noir

100% Poliestere
Peso: 510 gr/m²
Martindale 60.000 cicli



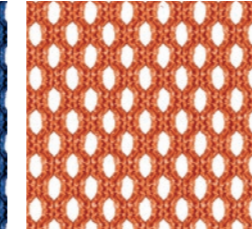
308 - Verde
Green | Vert

100% Polyester
Weight: 510 gr/m²
Martindale 60.000 turns

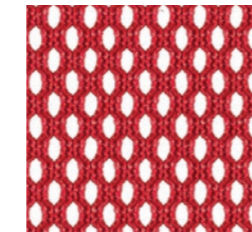


305 - Bluette
Bluette | Bluette

100% Polyester
Poids: 510 gr/m²
Martindale 60.000 cycles



306 - Arancio
Orange | Orange



307 - Rosso
Red | Rouge

×

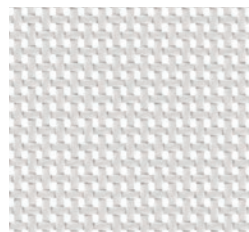
solo per schienale
for backrest only
seulement pour dossier

SISTEMA RETE
CAST RETE
F03 RETE

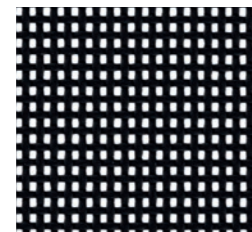
RETE_ R2

△

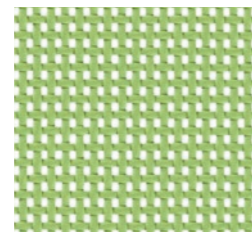
RETE BREAK



310 - Bianco
White | Blanc



312 - Nero
Black | Noir



311 - Verde
Green | Vert

70% PVC
30% Poliestere
Peso: 560 gr/m²
Martindale 100.000 cicli

70% PVC
30% Polyester
Weight: 560 gr/m²
Martindale 100.000 turns

70% PVC
30% Polyester
Poids: 560 gr/m²
Martindale 100.000 cycles

△ solo per schienale
for backrest only
seulement pour dossier

HELLÒ RETE
CIAK RETE

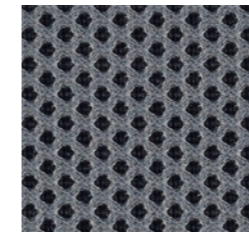
RETE_ R3

○

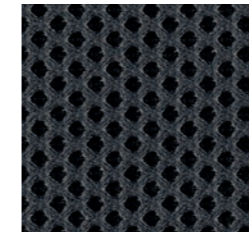
RETE GABRIEL



757 - Bianco
White | Blanc



758 - Acciaio
Steel | Acier



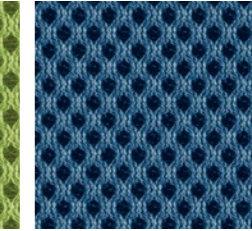
759 - Grafite
Graphite | Graphite

100% Poliestere
Peso: 319 gr/m²
Martindale 70.000 cicli
Ignifugo classe 1



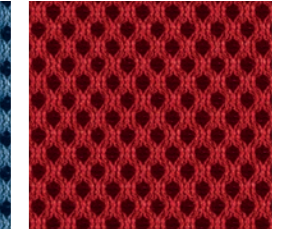
763 - Verde
Green | Vert

100% Polyester
Weight: 319 gr/m²
Martindale 70.000 turns
Fire-retardant class 1 (one)



765 - Turchese
Turquoise | Turquoise

100% Polyester
Poids: 319 gr/m²
Martindale 70.000 cycles
Ignifuge classe 1



768 - Rosso
Red | Rouge

○ solo per schienale
for backrest only
seulement pour dossier

OSCAR RETE

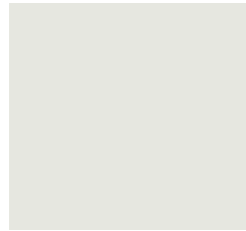
TEC_ T1

Mod. F01

100% Polipropilene

100% Polypropylene

100% Polypropylene



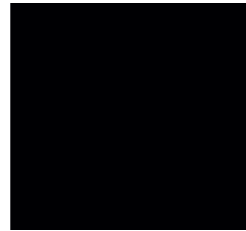
912 - Bianco
White | Blanc
(RAL 9003)



940 - Verde
Green | Vert
(PANTONE 7495 EC)



913 - Rosso
Red | Rouge
(RAL 3000)



950 - Nero
Black | Noir
(RAL 9005)

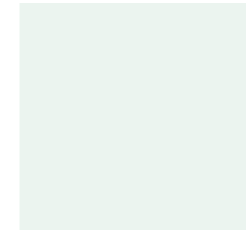
TEC_ T3

Mod. F03

100% Polipropilene

100% Polypropylene

100% Polypropylene



912 - Bianco
White | Blanc



950 - Nero
Black | Noir

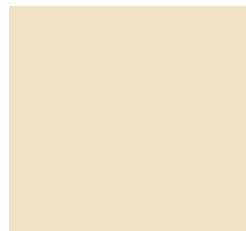
TEC_ T2

Mod. F02

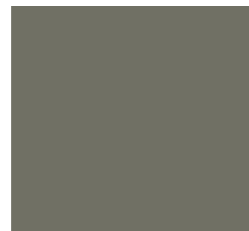
100% Polipropilene

100% Polypropylene

100% Polypropylene



916 - Avorio
Ivory | Ivoire
(RAL 1013)



917 - Tortora
Grey Beige | Gris Tourterelle
(RAL 7003)



918 - Giallo
Yellow | Jaune
(RAL 1012)

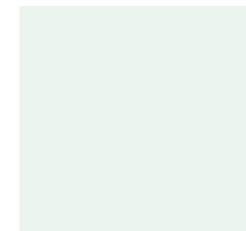
TEC_ T4

Mod. F04

100% Polipropilene

100% Polypropylene

100% Polypropylene



912 - Bianco
White | Blanc



914 - Crema
Cream | Crème



915 - Petrolio
Petroleum | Pétrole



950 - Nero
Black | Noir

LEGNI | WOOD | BOIS

○ Melaminico
Melamine
Melamine
△ 3D Foil



CHAIRS_ 020

METALLO | METAL | MÉTAL



VETRI | GLASS | VITRE



CHAIRS_ 021