

ELITE

SCHEMA DI MONTAGGIO/assembling schemeBINARI CON ANTE SCORREVOLI
tracks with sliding doors

LAS

CODICE
code **777 700 871**

DISSEGNO
drawing **SM 74011**

DATA
date **31-07-2019**

PAGINA
page **1/2**

INDICE DI REVISIONE N°
last revision no **1**

DATA REVISIONE
last date **21/11/2019**

ALTO
upBASSO
down

1 pz. 1 pz.

6 pz.
3x35

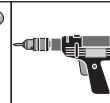
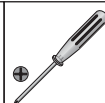
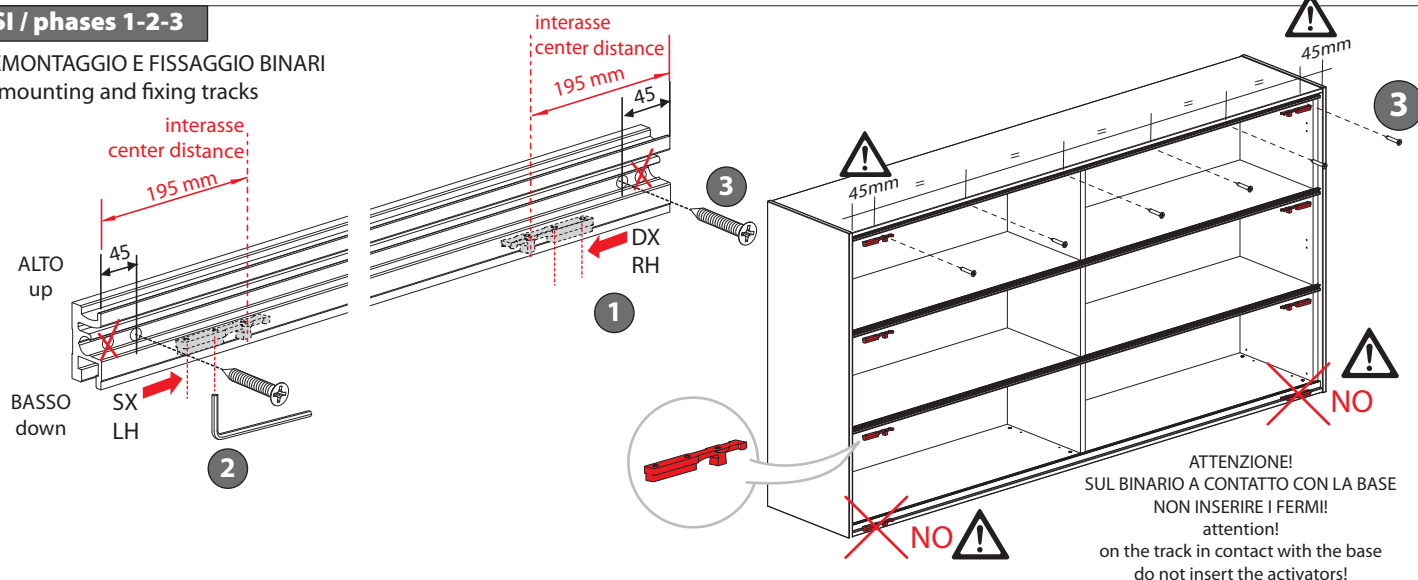
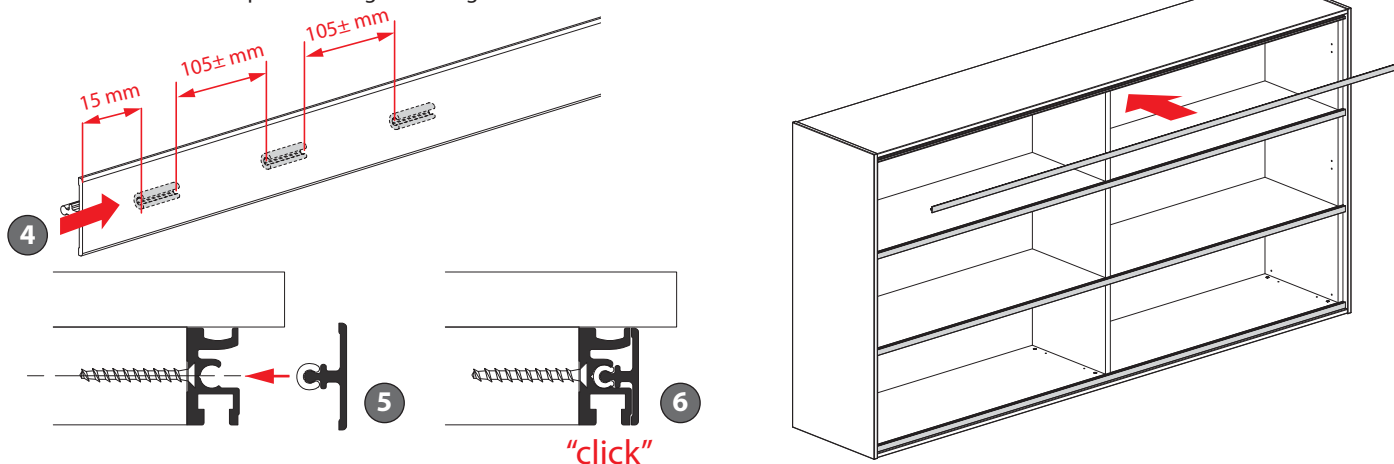
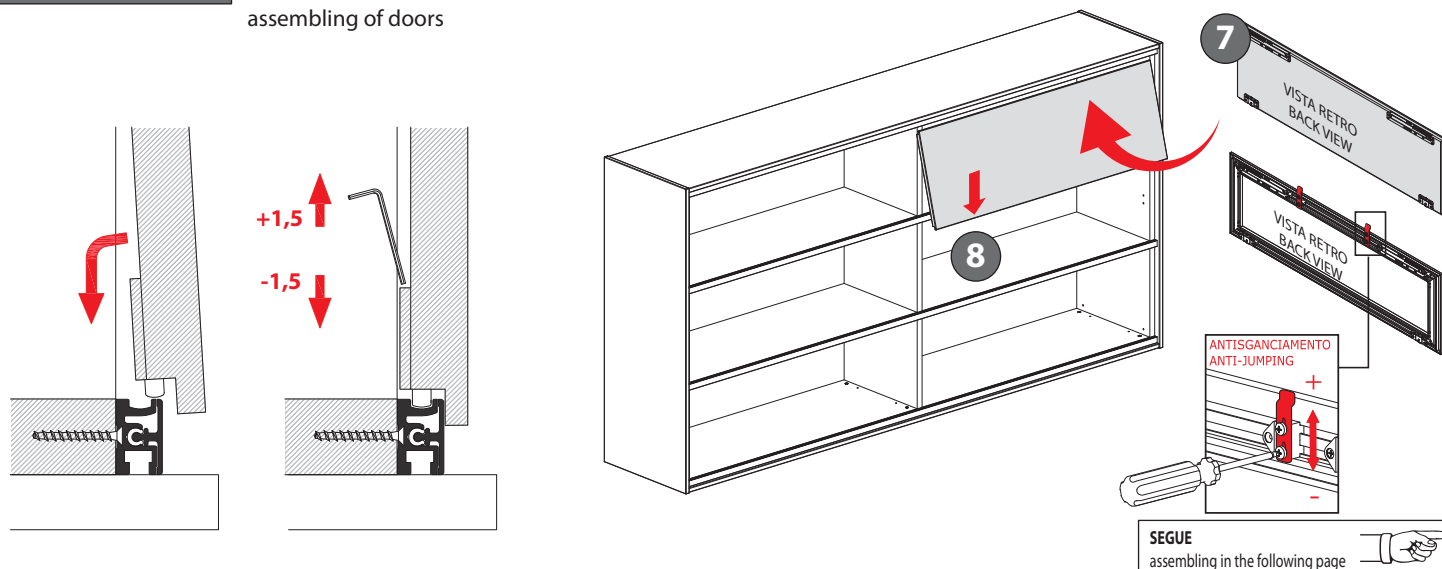
20 pz.

2 pz.

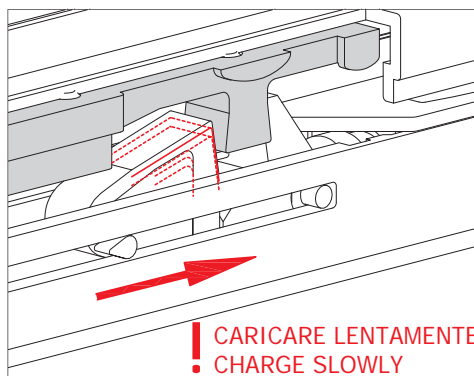
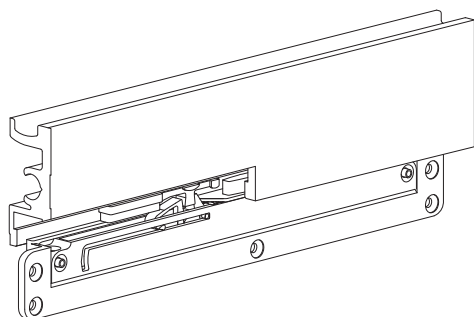
Ø2mm

1 pz.

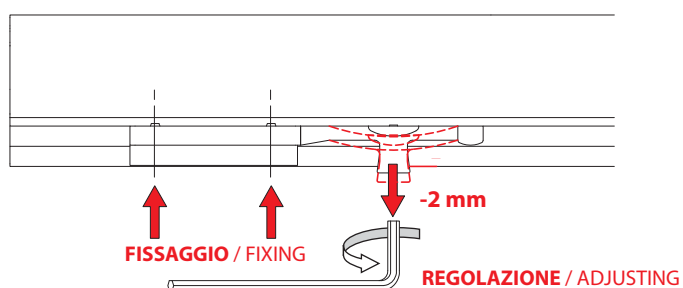
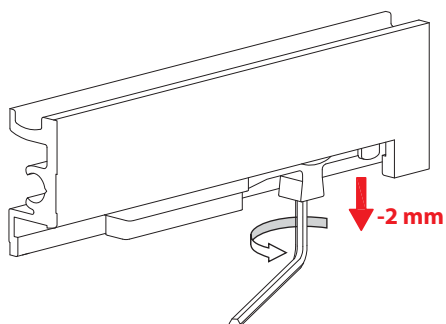
**N.B. PER IL MONTAGGIO
SEGUIRE LE FASI NUMERATE**
assemble following the numbered phases

SCHEMA DI MONTAGGIO
assembling scheme**FASI / phases 1-2-3****PREMONTAGGIO E FISSAGGIO BINARI**
premounting and fixing tracks**FASI / phases 4-5-6****PREMONTAGGIO E FISSAGGIO COPERTURE**
premounting and fixing covers**FASI / phases 7-8****MONTAGGIO ANTE**
assembling of doors

ATTIVAZIONE AUTOMATICA DELL'AMMORTIZZATORE / SELF-ACTIVATING SOFT CLOSINGS



REGOLAZIONE DELL'ATTIVATORE / ACTIVATOR ADJUSTING



REGOLAZIONE DELLO SCORREVOLE / SLIDING ADJUSTING

