

PEDRALI®

Beauty,
tradition
and innovation

Finishes index

Indice delle finiture

PRODUCT NAME NOME PRODOTTO	PAGE PAGINA
UPHOLSTERY COLLECTIONS COLLEZIONI IMBOTTITI	
Fabrics / Tessuti	007
Hard Leather / Cuoio	054
Leather / Pelle	050
Simil Leather / Finta pelle	041
Velvet / Velluto	056
 POWDER COATED CAST-IRON, STEEL AND ALUMINIUM GHISA, ACCIAIO E ALLUMINIO VERNICIATI	
Indoor / Per uso interno	064
Outdoor / Per uso esterno	067

Material for upholstery and cushions

Rivestimenti per imbottiture e cuscini



Legend

Legenda



Fire-retardant
Ignifugo



Outdoor use
Adatto per uso esterno

washing / lavaggio



Do not wash
Lavaggio a secco



Hand wash
Lavaggio a mano



Wash at max 30°C normal
Lavaggio normale, max 30°C



Wash at max 30°C mild
Lavaggio delicato, max 30°C



Wash at max 40°C normal
Lavaggio normale, max 40°C



Wash at max 60°C mild
Lavaggio delicato, max 60°C

dry cleaning / lavaggio a secco



Do not dry clean
Lavaggio a secco non consentito



Dry clean, perchloroethylene (PCE)
Lavaggio a secco con percloroetilene (PCE)



Gentle dry cleaning with PCE
Lavaggio a secco delicato con PCE

drying / asciugatura



Tumble dry at low temperature
Asciugatrice a bassa temperatura



Do not tumble dry
Non asciugare in asciugatrice



Dry flat
Asciugare disteso



Do not wring
Non strizzare

ironing / stiratura



Do not iron
Non stirare



Iron at low temperature
Stirare a bassa temperatura



Iron at medium temperature
Stirare a media temperatura

bleaching / candeggio



Do not bleach
Non candeggiare



Any bleaching agent allowed
Candeggio consentito



Compliant to Ecolabel UE environmental requirements
Conforme ai requisiti ambientali Ecolabel UE



Product certified for low chemical emissions:
Prodotto certificato per basse emissioni chimiche:
UL.COM/GG
UL 2818

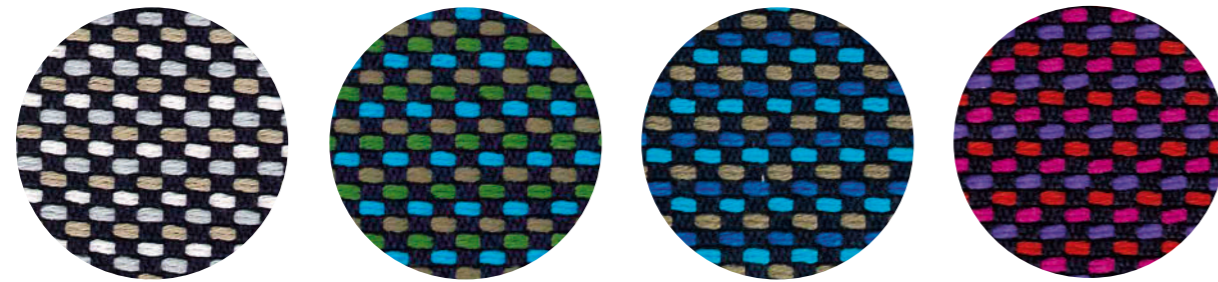


96/98/CE - 2010/68/UE EU marine equipment rules compliant
Conforme ai requisiti europei per equipaggiamenti marittimi

Upholstery Collections

Collezioni imbottiti

Fabrics Tessuti



C 37

C 38

C 39

C 36

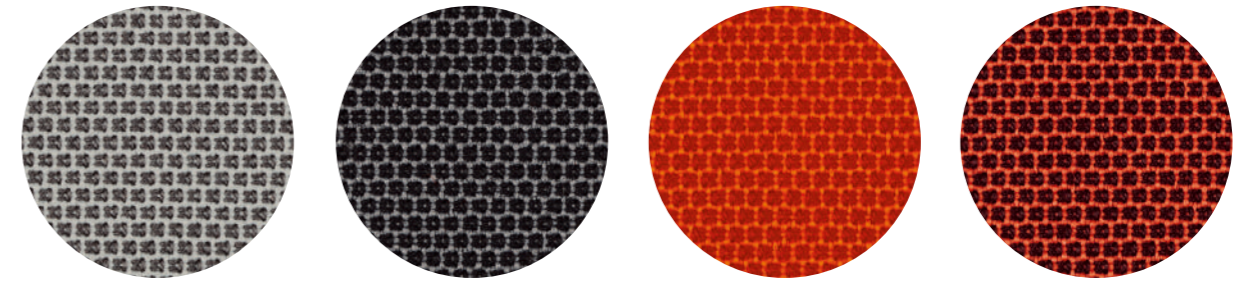
technical specifications / specifiche tecniche



- COMPOSITION / COMPOSIZIONE
94% Cotton
6% Polyamide
- WEIGHT / GRAMMATURA
480 g/m² (14.16 oz/yd²)

- ABRASION / ABRASIONE
40.000 cycles, Martindale
(EN ISO 12947-2)
- RUBBING FASTNESS / SOLIDITÀ ALLO SFREGAMENTO
Dry 4-5 and Wet 2-3, scale 1-5
(ISO 105-X12)

- PILLING
4, scale 1-5 (EN ISO 12945-2
to 5.000 cycles)
- LIGHT FASTNESS / SOLIDITÀ ALLA LUCE
4-5, scale 1-8 (ISO 105-B02)

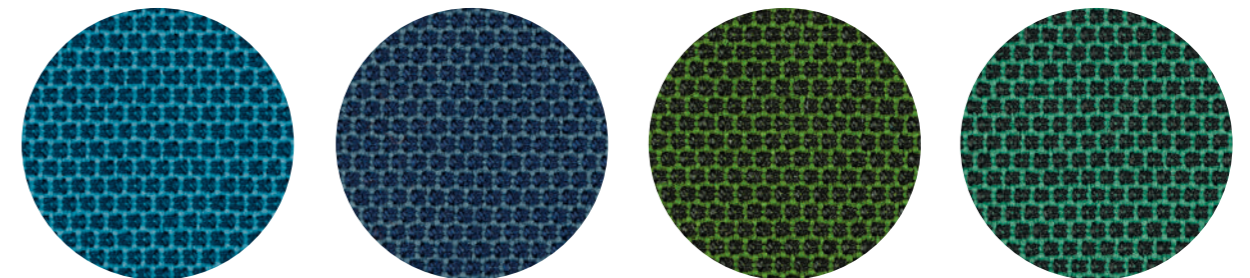


C 101

C 86

C 85

C 89

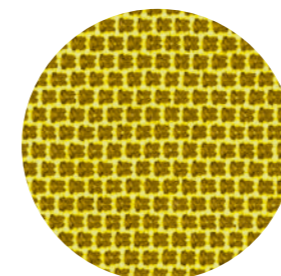


C 83

C 100

C 84

C 88



C 87

technical specifications / specifiche tecniche



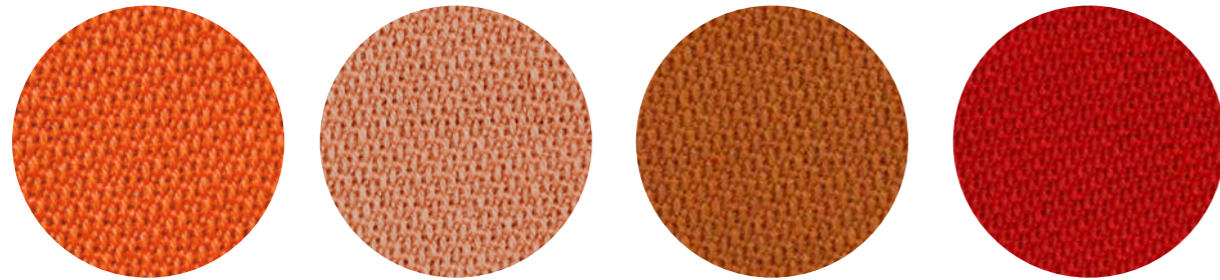
- COMPOSITION / COMPOSIZIONE
54% New Zealand Wool
44% Post-consumer recycled polyester
2% Polyamide
- WEIGHT / GRAMMATURA
307 g/m² (9.05 oz/yd²)

- APPROVED / OMOLOGATO

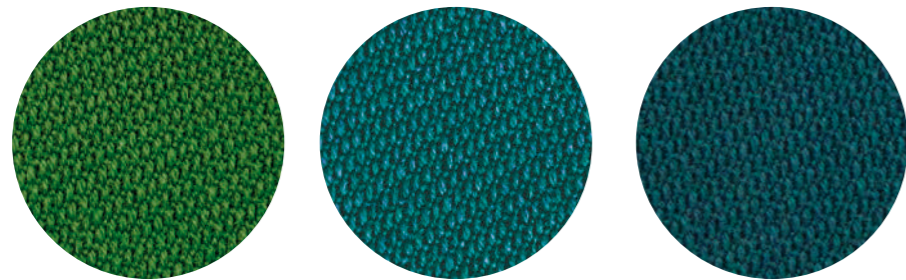


- ABRASION / ABRASIONE
100.000 cycles, Martindale
(EN ISO 12947-2)
- RUBBING FASTNESS / SOLIDITÀ ALLO SFREGAMENTO
Dry and Wet 4-5, scale 1-5
(ISO 105-X12)
- PILLING
4-5, scale 1-5 (EN ISO 12945-2)
- LIGHT FASTNESS / SOLIDITÀ ALLA LUCE
5-7, scale 1-8 (ISO 105-B02)

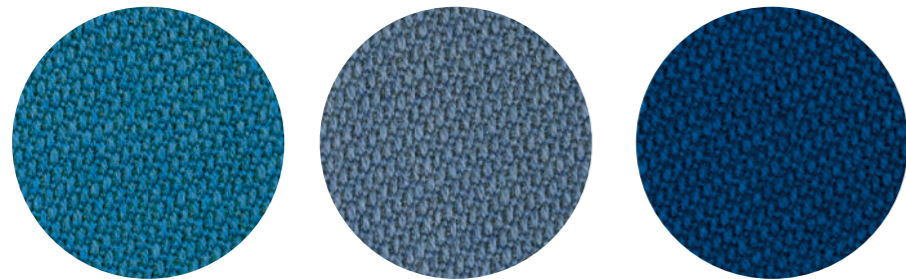
- FLAME RESISTANCE / RESISTENZA AL FUOCO
EN 1021 – 1/2
EN 1021-1
ÖNORM A3800-1
US CA TB 117-2013 - Compliant
to the criteria certifying the
absence of flame retardant
chemicals (AB 2998)



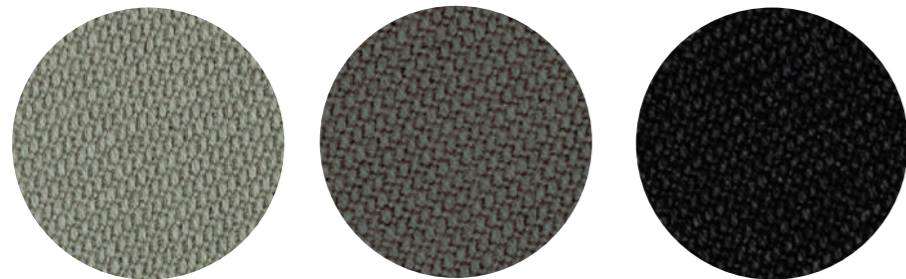
C 110 C 111 C 112 C 113



C 117 C 118 C 119



C 120 C 121 C 122

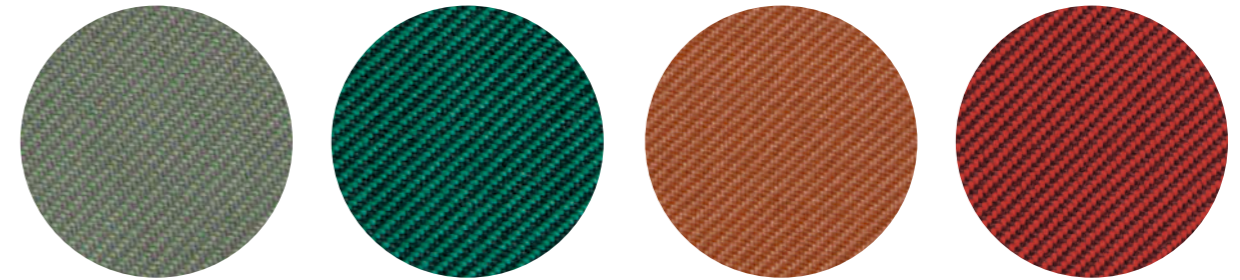


C 114 C 115 C 116

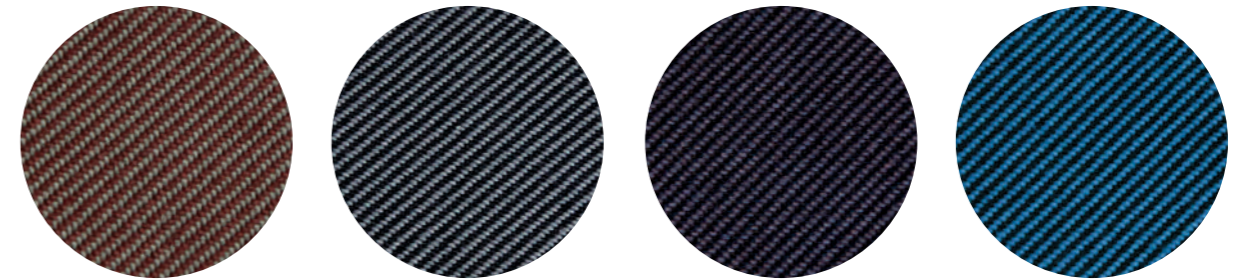
technical specifications / specifiche tecniche



- COLLECTION / COLLEZIONE **svensson-SEMI**
- COMPOSITION / COMPOSIZIONE 85% Wool, 15% Polyamide
- WEIGHT / GRAMMATURA 330 g/m² (9.73 oz/yd²)
- ABRASION / ABRASIONE 100.000 cycles, Martindale (EN ISO 12947-2)
- RUBBING FASTNESS / SOLIDITÀ ALLO SFREGAMENTO Dry 4 and Wet 3-4, scale 1-5 (ISO 105-X12)
- LIGHT FASTNESS / SOLIDITÀ ALLA LUCE 5-7, scale 1-8 (ISO 105-B02)
- FLAME RESISTANCE / RESISTENZA AL FUOCO BS 5852 Crib 5 EN 1021 - 1/2 IMO FTP Code 2010: Part 8
- UNI 9175 Classe 1 IM US CA TB 117-2013 - Compliant to the criteria certifying the absence of flame retardant chemicals (AB 2998)



C 210 C 211 C 212 C 213



C 214 C 215 C 216 C 217

technical specifications / specifiche tecniche

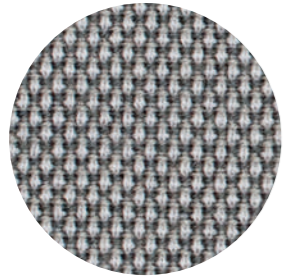


- COLLECTION / COLLEZIONE **kvadrat-RELATE** DESIGNER Patricia Urquiola
- COMPOSITION / COMPOSIZIONE 100% TREVIRA CS®
- WEIGHT / GRAMMATURA 320 g/m² (9.47 oz/yd²)
- ABRASION / ABRASIONE 80.000 cycles, Martindale (EN ISO 12947)
- RUBBING FASTNESS / SOLIDITÀ ALLO SFREGAMENTO Dry and Wet 5, scale 1-5 (ISO 105-X12)
- PILLING 4-5, scale 1-5 (EN ISO 12945)
- LIGHT FASTNESS / SOLIDITÀ ALLA LUCE 6-7, scale 1-8 (ISO 105-B02)
- SOUND ABSORPTION / ASSORBIMENTO ACUSTICO folded: $\alpha_w = 0.70$ Class C (EN ISO 354)
- FLAME RESISTANCE / RESISTENZA AL FUOCO AS/NZS 3837 Class 2 ASTM E84 Class B Adhered ASTM E84 Class A Unadhered BS 5852 Crib 5 with treatment BS 5852 Part 1 with treatment BS 5867 Part 2 type B
- DIN 4102 B1 EN 1021 - 1/2 EN 13501-1, B-s1, d0 GB 8624 B1 FAR 25.853 IMO FTP Code 2010: Part 8 IMO FTP Code 2010: Part 5 NF D60-013 NF P92 507 M1 NFPA 701 ÖNORM B1/Q1 CAN ULC S102 S109 SN 198 898 5.2 UNI 9177 Classe 1 UNI 9175 Classe 1 IM US CA TB 117-2013

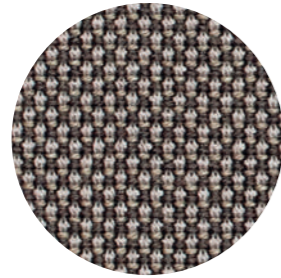
APPROVED / OMOLOGATO



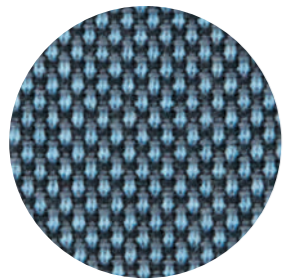
CATEGORY D / CATEGORIA D



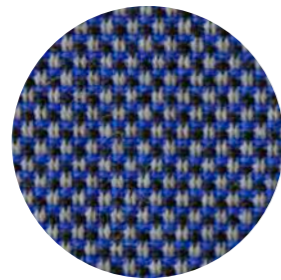
D 40



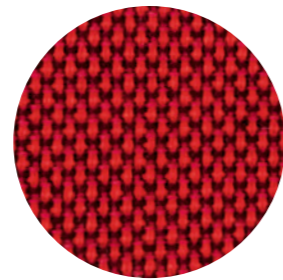
D 41



D 43



D 44



D 42

technical specifications / specifiche tecniche



- **COMPOSITION / COMPOSIZIONE**
88% New Zealand Wool
12% Polyamide
- **WEIGHT / GRAMMATURA**
420 g/m² (12.39 oz/yd²)
- **ABRASION / ABRASIONE**
100.000 cycles, Martindale
(EN ISO 12947-2)
- **RUBBING FASTNESS / SOLIDITÀ ALLO SFREGAMENTO**
Dry and Wet 4-5, scale 1-5
(ISO 105-X12)
- **PILLING**
4-5, scale 1-5 (EN ISO 12945-2)
- **LIGHT FASTNESS / SOLIDITÀ ALLA LUCE**
5-7, scale 1-8 (ISO 105-B02)
- **FLAME RESISTANCE / RESISTENZA AL FUOCO**
ASTM E84 Class 2
EN 1021 – 1/2
BS 5852 Part 1 0, 1
NF D60-013
UNI 9175 Classe 1 IM
US CA TB 117-2013 - Compliant
to the criteria certifying the
absence of flame retardant
chemicals (AB 2998)

- APPROVED / OMOLOGATO



CATEGORY D / CATEGORIA D



D 120



D 121



D 122

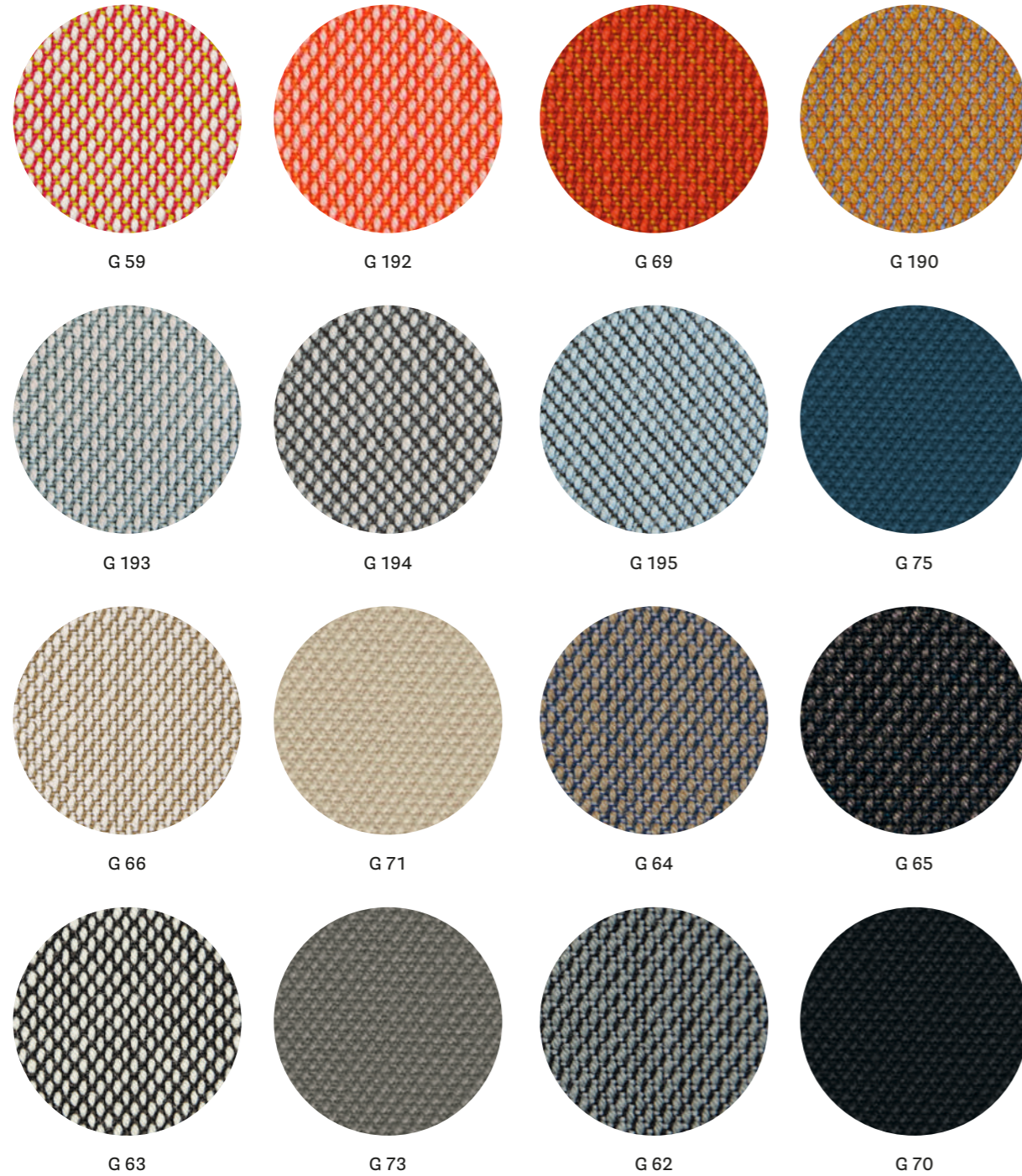


D 123

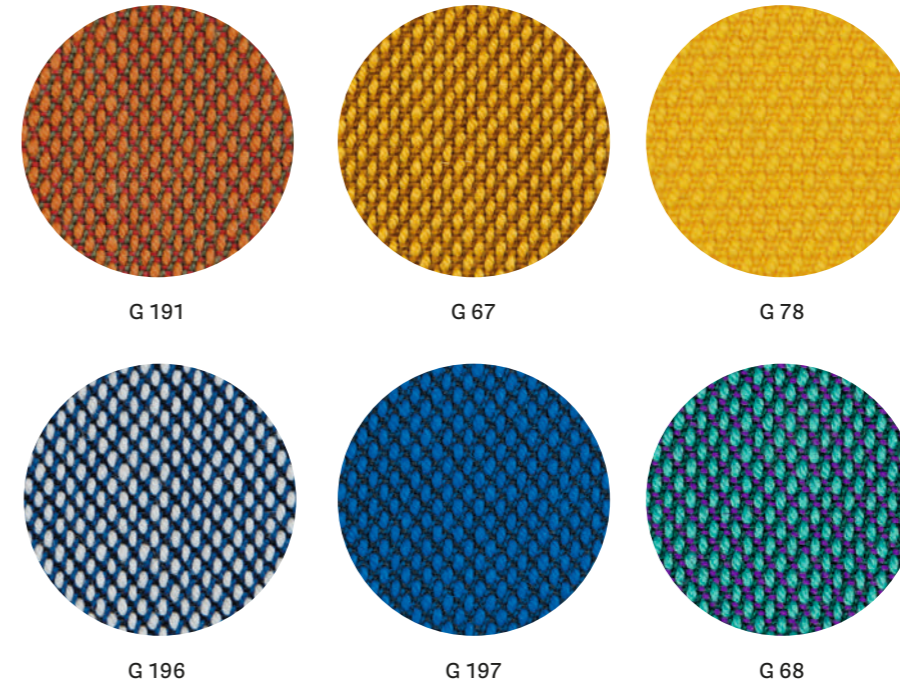
technical specifications / specifiche tecniche



- **COMPOSITION / COMPOSIZIONE**
22% Acrylic
22% Virgin Wool
22% Polyester
14% Viscose
13% Cotton
7% Linen
- **WEIGHT / GRAMMATURA**
580 g/m² (17.11 oz/yd²)
- **ABRASION / ABRASIONE**
30.000 cycles, Martindale
(EN ISO 12947-2)
- **RUBBING FASTNESS / SOLIDITÀ ALLO SFREGAMENTO**
Dry 4-5 and Wet 3, scale 1-5
(ISO 105-X12)
- **PILLING**
4, scale 1-5 (EN ISO 12945-2 to
5.000 rubs)
- **LIGHT FASTNESS / SOLIDITÀ ALLA LUCE**
5-6, scale 1-8
(ISO 105 – B02)
- **FLAME RESISTANCE / RESISTENZA AL FUOCO**
BS 5852 Part 1
US CA TB 117-2013 - Compliant to
the criteria certifying the absence of
flame retardant chemicals (AB 2998)



G 59 G 192 G 69 G 190
 G 193 G 194 G 195 G 75
 G 66 G 71 G 64 G 65
 G 63 G 73 G 62 G 70



G 191 G 67 G 78
 G 196 G 197 G 68

technical specifications / specifiche tecniche

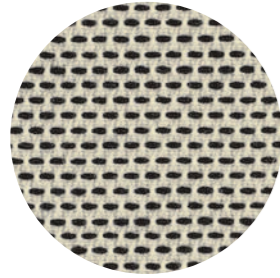


- COLLECTION / COLLEZIONE
kvadrat
 G59+G69; G190+G197: STEELCUT TRIO
 G70+G78: STEELCUT
 DESIGNERS Dijkmeijer & Ridolfo
- COMPOSITION / COMPOSIZIONE
 90% New wool
 10% Nylon
- WEIGHT / GRAMMATURA
 550 g/m² (16.22 oz/yd²)
 for G70+G78: 590 g/m² (17.37 oz/yd²)
- ABRASION / ABRASIONE
 100.000 cycles
 Martindale (EN ISO 12947)

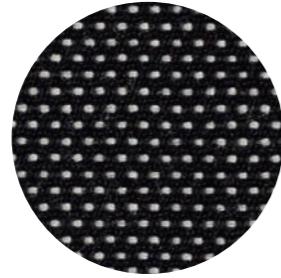
- RUBBING FASTNESS / SOLIDITÀ ALLO SFREGAMENTO
 Dry and Wet 4-5,
 for G70+G78: Dry 4 and Wet 3-4,
 scale 1-5 (ISO 105-X12)
- PILLING
 4, scale 1-5; for G70+G78: 3-4, scale 1-5
 (EN ISO 12945)
- LIGHT FASTNESS / SOLIDITÀ ALLA LUCE
 6-7, for G70+G78: 6 scale 1-8
 (ISO 105-B02)
- SOUND ABSORPTION / ASSORBIMENTO ACUSTICO
 folded: $\alpha_w = 0.95$ Class A
 for G70+G78: folded: $\alpha_w = 0.80$ Class B
 (EN ISO 354)
- FLAME RESISTANCE / RESISTENZA AL FUOCO
 AS/NZS 1530.3
 AS/NZS 3837 Class 2
 ASTM E84 Class B Adhered

- BS 5852 Part 1
 BS 5852 Crib 5 with treatment
 EN 1021 - 1/2
 IMO FTP Code 2010: Part 8
 NF D60-013
 NFPA 260
 ÖNORM B1/Q1
 SN 198 898 5.3 with treatment
 UNI 9175 Classe 1 IM
 US CA TB 117-2013 - Compliant
 to the criteria certifying the absence
 of flame retardant chemicals (AB
 2998)
 for G59+G69 | G190+G197:
 ASTM E84 Class B Unadhered
 for G70+G78:
 ASTM E84 Class A Unadhered
 EN 13501, B-s2, d1, with treatment

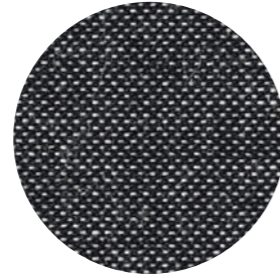




G 101



G 100



G 102

technical specifications / specifiche tecniche



• COLLECTION / COLLEZIONE
kvadrat - BASEL
DESIGNERS Herzog & de Meuron

• COMPOSITION / COMPOSIZIONE
90% New wool
10% Nylon

• WEIGHT / GRAMMATURA
365 g/m² (10.76 oz/yd²)

• ABRASION / ABRASIONE
50.000 cycles,
Martindale (EN ISO 12947)

• RUBBING FASTNESS / SOLIDITÀ ALLO SFREGAMENTO
Dry and Wet 5, scale 1-5
(ISO 105-X12)

• PILLING
4, scale 1-5 (EN ISO 12945)

• LIGHT FASTNESS / SOLIDITÀ ALLA LUCE
6-7, scale 1-8 (ISO 105-B02)

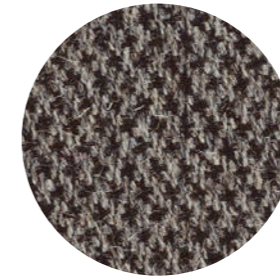
• FLAME RESISTANCE / RESISTENZA AL FUOCO
AS/NZS 3837 Class 2
BS 5852 Part 1
BS 5852 Crib 5 with treatment

EN 1021 – 1/2
IMO FTP Code 2010: Part 8
NFPA 260
NF D60-013
ÖNORM B1/Q1
SN 198 898 5.3 with treatment
UNI 9175 Classe 1 IM
US CA TB 117-2013 - Compliant
to the criteria certifying the
absence of flame retardant
chemicals (AB 2998)

• APPROVED / OMOLOGATO



G 120



G 121



G 122

technical specifications / specifiche tecniche



• COLLECTION / COLLEZIONE
kvadrat - MOLLY
DESIGNER Åsa Pärson

• COMPOSITION / COMPOSIZIONE
100% New wool

• WEIGHT / GRAMMATURA
493 g/m² (14.54 oz/yd²)

• ABRASION / ABRASIONE
75.000 cycles,
Martindale (EN ISO 12947)

• RUBBING FASTNESS / SOLIDITÀ ALLO SFREGAMENTO
Dry 5 and Wet 4-5, scale 1-5
(ISO 105-X12)

• PILLING
3-4, scale 1-5 (EN ISO 12945)

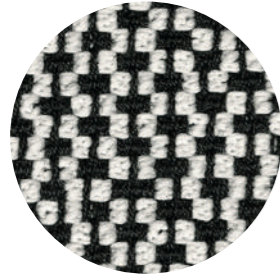
• LIGHT FASTNESS / SOLIDITÀ ALLA LUCE
6-7, scale 1-8 (ISO 105-B02)

• FLAME RESISTANCE / RESISTENZA AL FUOCO
AS/NZS 3837 Class 2
ASTM E84 Class A Adhered
ASTM E84 Class B Unadhered

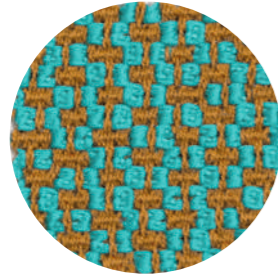
BS 5852 Part 1
BS 5852 Crib 5 with treatment
EN 1021 – 1/2
IMO FTP Code 2010: Part 8
NFPA 260
NF D60-013
ÖNORM B1/Q1
SN 198 898 5.3 with treatment
UNI 9175 Classe 1 IM
US CA TB 117-2013 - Compliant
to the criteria certifying the
absence of flame retardant
chemicals (AB 2998)

• APPROVED / OMOLOGATO





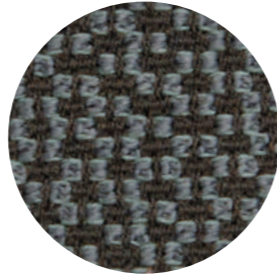
G 130



G 131



G 132



G 133

technical specifications / specifiche tecniche

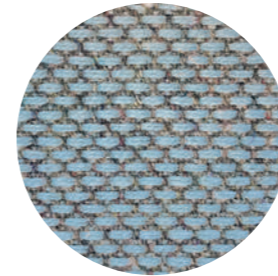


- COMPOSITION / COMPOSIZIONE
95% Virgin Wool
5% Polyamide
- WEIGHT / GRAMMATURA
660 g/m² (19.47 oz/yd²)
- ABRASION / ABRASIONE
52.000 cycles, Martindale
(EN ISO 12947-2)

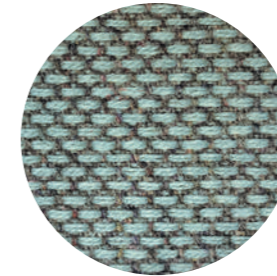
- PILLING
4-5, scale 1-5 (EN ISO 12945-2)
- LIGHT FASTNESS / SOLIDITÀ ALLA LUCE
5-8, scale 1-8 (ISO 105-B02)
- SOUND ABSORPTION / ASSORBIMENTO ACUSTICO
folded: $\alpha_w = 0.85$ Class B (ISO 11654)
- FLAME RESISTANCE / RESISTENZA AL FUOCO
BS 5852 Part 1
BS 5852 Crib 5

DIN 4102-1 B2
EN 1021 - 1/2
EN 13501-1
FAR 25.853 (12 sec. vertical)
IMO: 2014/90/EU (MED)
UNI 9175 Classe 1 IM
US CA TB 117-2013 - Compliant to
the criteria certifying the absence of
flame retardant chemicals (AB 2998)

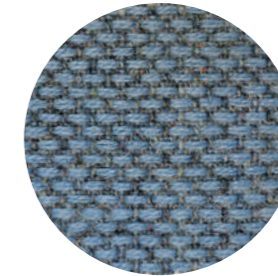
- APPROVED / OMOLOGATO



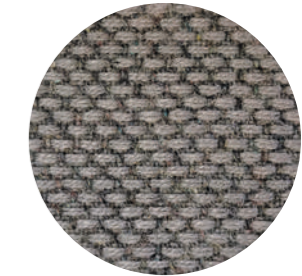
G 143



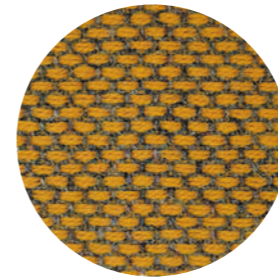
G 145



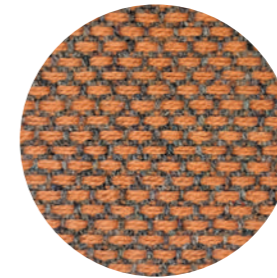
G 144



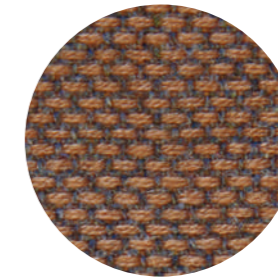
G 146



G 140



G 141



G 142

technical specifications / specifiche tecniche



- COLLECTION / COLLEZIONE
kvadrat - RE-WOOL
DESIGNER Margrethe Odgaard
- COMPOSITION / COMPOSIZIONE
45% Recycled wool
45% New wool
10% Nylon
- WEIGHT / GRAMMATURA
385 g/m² (11.35 oz/yd²)
- ABRASION / ABRASIONE
100.000 cycles, Martindale
(EN ISO 12947)

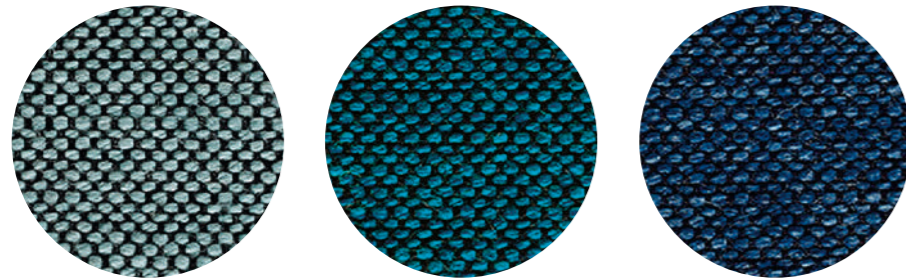
- RUBBING FASTNESS / SOLIDITÀ ALLO SFREGAMENTO
Dry 4-5 and Wet 4, scale 1-5
(ISO 105-X12)
- PILLING
4, scale 1-5 (EN ISO 12945)
- LIGHT FASTNESS / SOLIDITÀ ALLA LUCE
6, scale 1-8 (ISO 105-B02)
- SOUND ABSORPTION / ASSORBIMENTO ACUSTICO
folded: $\alpha_w = 0.75$ Class C (EN ISO 354)
- FLAME RESISTANCE / RESISTENZA AL FUOCO
AS/NZS 1530.3
AS/NZS 3837 Class 2

BS 5852 Part 1
BS 5852 Crib 5 with treatment
EN 1021 - 1/2
EN 13501, B-s2, d0, with treatment
IMO FTP Code 2010: Part 8
NF D60-013
SN 198 898 5.3 with treatment
ÖNORM B1/Q1
UNI 9175 Classe 1 IM
US CA TB 117-2013 - Compliant to
the criteria certifying the absence of
flame retardant chemicals (AB 2998)

- APPROVED / OMOLOGATO



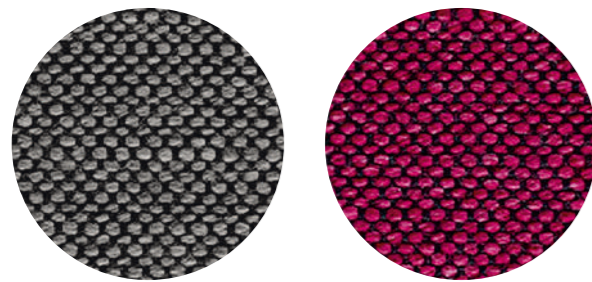
PRODUCT CERTIFIED
FOR LOW CHEMICAL
EMISSIONS:
UL.COM/IGG
UL 2818
170166-420



G 154

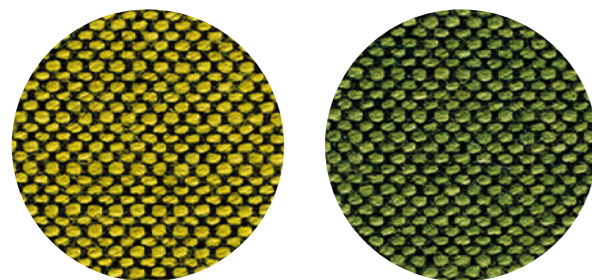
G 155

G 156



G 151

G 150



G 152

G 153

technical specifications / specifiche tecniche



• COLLECTION / COLLEZIONE
svensson - BALANCE

• COMPOSITION / COMPOSIZIONE
 82% Wool
 12% Rami
 6% Polyamide

• APPROVED / OMOLOGATO



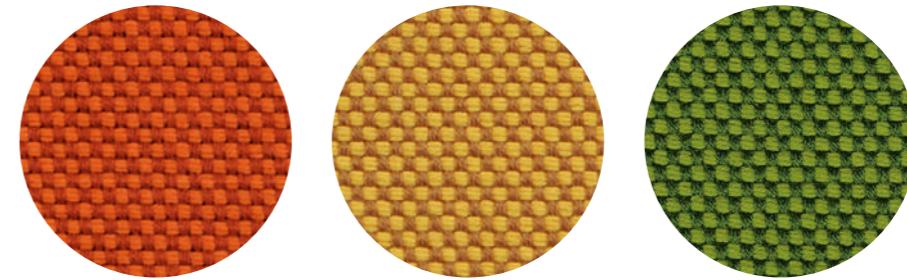
• WEIGHT / GRAMMATURA
 570 g/m² (16.81 oz/yd²)

• ABRASION / ABRASIONE
 100.000 cycles, Martindale (EN ISO 12947-2)

• RUBBING FASTNESS / SOLIDITÀ ALLO SFREGAMENTO
 Dry 4 and Wet 3-4, scale 1-5
 (ISO 105-X12)

• LIGHT FASTNESS / SOLIDITÀ ALLA LUCE
 5-7, scale 1-8 (ISO 105-B02)

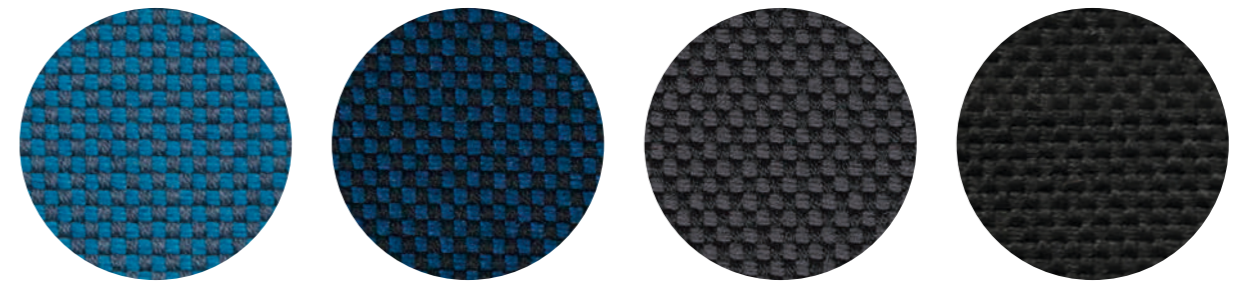
• FLAME RESISTANCE / RESISTENZA AL FUOCO
 BS 5852 Crib 5
 EN 1021 - 1/2
 IMO FTP Code 2010: Part 8
 UNI 9175 Classe 1 IM
 US CA TB 117-2013 - Compliant to
 the criteria certifying the absence of
 flame retardant chemicals (AB 2998)



G 170

G 171

G 172

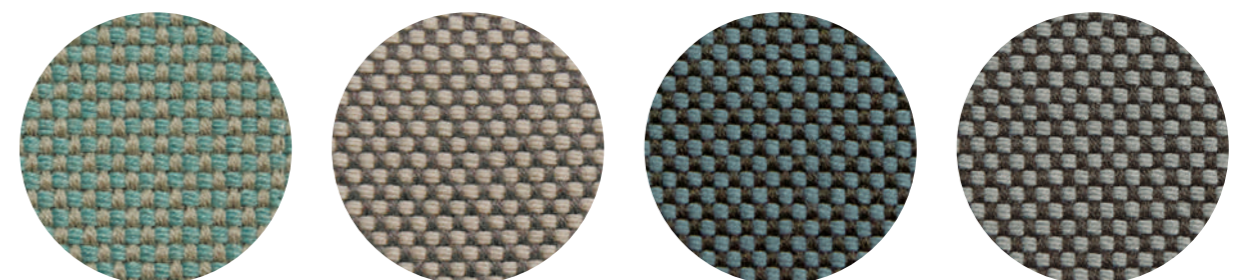


G 173

G 174

G 175

G 176



G 210

G 211

G 212

G 213

technical specifications / specifiche tecniche



• COMPOSITION / COMPOSIZIONE
 96% Virgin Wool
 4% Polyamide

• WEIGHT / GRAMMATURA
 660 g/m² (19.47 oz/yd²)

• APPROVED / OMOLOGATO



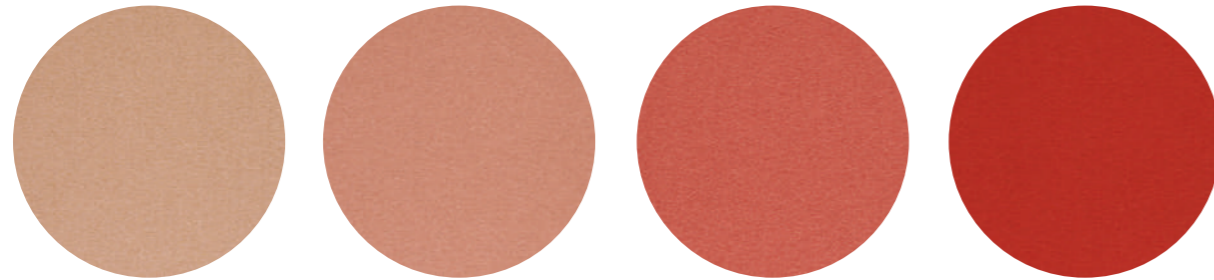
• ABRASION / ABRASIONE
 90.000 cycles, Martindale
 (EN ISO 12947-2)

• PILLING
 4-5, scale 1-5 (EN ISO 12945-2)

• LIGHT FASTNESS / SOLIDITÀ ALLA LUCE
 5, scale 1-8 (ISO 105-B02)

• SOUND ABSORPTION / ASSORBIMENTO ACUSTICO
 folded: $\alpha_w = 0.95$ Class A (ISO 11654)

• FLAME RESISTANCE / RESISTENZA AL FUOCO
 BS 5852 Part 1
 BS 5852 Crib 5 with treatment
 DIN 4102-1 B2 with treatment
 EN 13501-1 with treatment
 EN 1021 - 1/2
 FAR 25.853 (12 sec. vertical) with
 treatment
 IMO: 2014/90/EU (MED)
 UNI 9175 Classe 1 IM
 US CA TB 117-2013 - Compliant
 to the criteria certifying the
 absence of flame retardant
 chemicals (AB 2998)

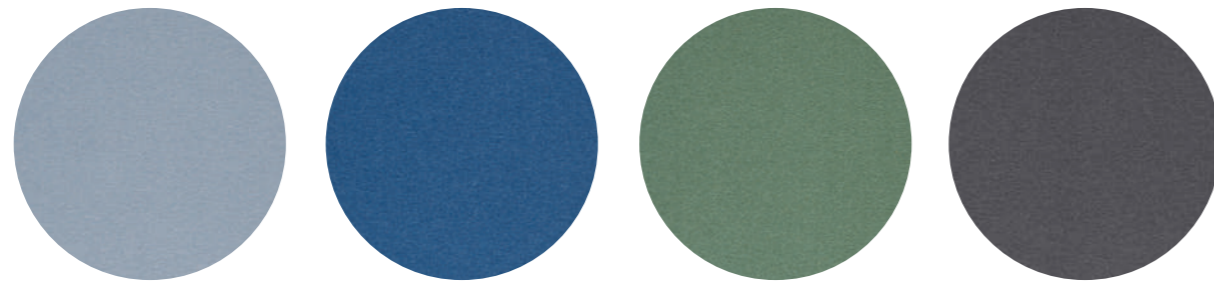


G 163

G 160

G 161

G 162

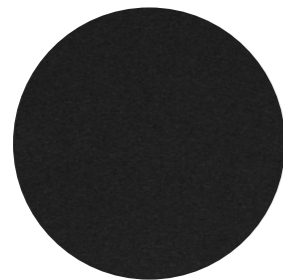


G 159

G 166

G 167

G 168



G 169

• APPROVED / OMOLOGATO



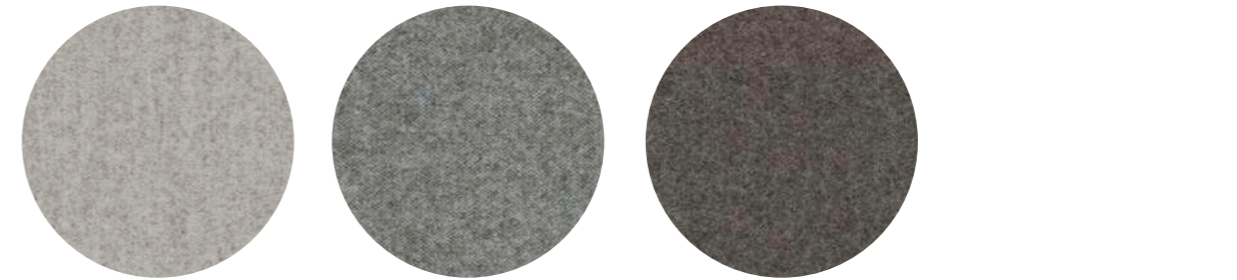
technical specifications / specifiche tecniche



- COLLECTION / COLLEZIONE
kvadrat - HERO
DESIGNER Patricia Urquiola
- COMPOSITION / COMPOSIZIONE
97% New wool
3% Recycled nylon
- WEIGHT / GRAMMATURA
415 g/m² (12.21 oz/yd²)
- ABRASION / ABRASIONE
45.000 cycles, Martindale
(EN ISO 12947)

- RUBBING FASTNESS / SOLIDITÀ ALLO SFREGAMENTO
Dry and Wet 4-5, scale 1-5
(ISO 105-X12)
- PILLING
3-4, scale 1-5 (EN ISO 12945)
- LIGHT FASTNESS / SOLIDITÀ ALLA LUCE
6, scale 1-8 (ISO 105-B02)
- SOUND ABSORPTION / ASSORBIMENTO ACUSTICO
folded: $\alpha_w = 0.80$ Class B (EN ISO 354)
- FLAME RESISTANCE / RESISTENZA AL FUOCO
AS/NZS 3837 Class 2
ASTM E84 Class A Adhered
ASTM E84 Class A Unadhered
BS 5852 Part 1

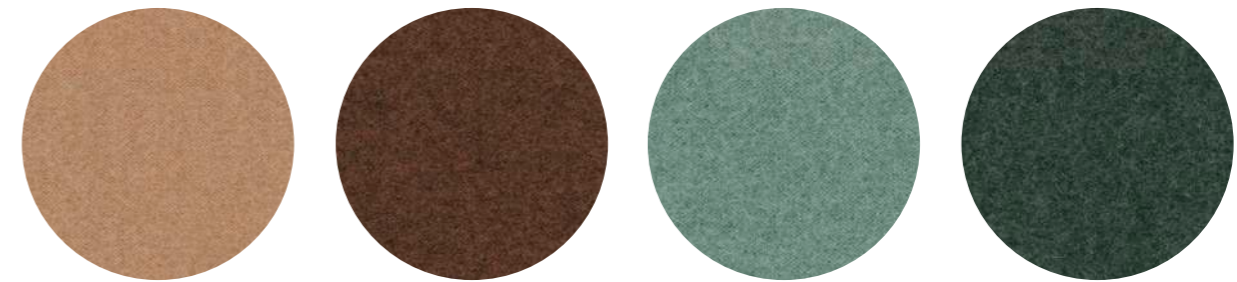
- BS 5852 Crib 5 with treatment
EN 1021 - 1/2
EN 13773 Class 1 with treatment
IMO FTP Code 2010: Part 8
NF D60-013
NFPA 701 with treatment
SN 198 898 5.3 with treatment
UNI 9175 Classe 1 IM
US CA TB 117-2013
NF D60-013
SN 198 898 5.3 with treatment
UNI 9175 Classe 1 IM
US CA TB 117-2013 - Compliant to
the criteria certifying the absence of
flame retardant chemicals (AB 2998)



G 250

G 251

G 252

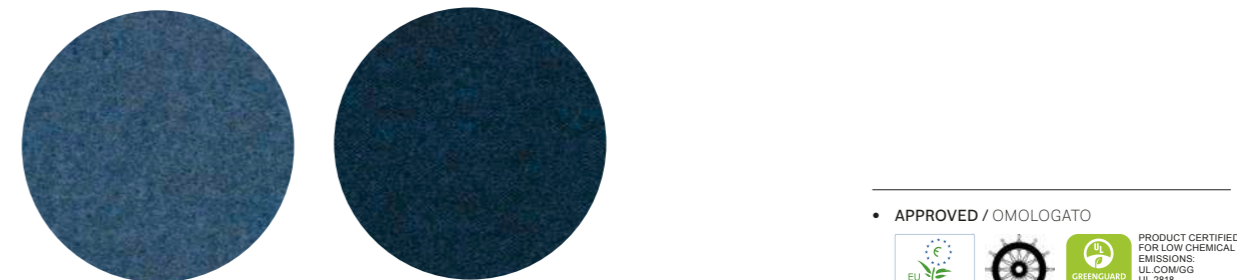


G 253

G 254

G 255

G 256



G 257

G 258

• APPROVED / OMOLOGATO



technical specifications / specifiche tecniche



- COLLECTION / COLLEZIONE
kvadrat - HERO
DESIGNER Patricia Urquiola
- COMPOSITION / COMPOSIZIONE
97% New wool
3% Recycled nylon
- WEIGHT / GRAMMATURA
400 g/m² (11.80 oz/yd²)
- ABRASION / ABRASIONE
45.000 cycles, Martindale
(EN ISO 12947)

- RUBBING FASTNESS / SOLIDITÀ ALLO SFREGAMENTO
Dry and Wet 4-5, scale 1-5
(ISO 105-X12)
- PILLING
3-4, scale 1-5 (EN ISO 12945)
- LIGHT FASTNESS / SOLIDITÀ ALLA LUCE
6, scale 1-8 (ISO 105-B02)
- SOUND ABSORPTION / ASSORBIMENTO ACUSTICO
folded: $\alpha_w = 0.80$ Class B (EN ISO 354)
- FLAME RESISTANCE / RESISTENZA AL FUOCO
AS/NZS 3837 Class 1
ASTM E84 Class A Adhered

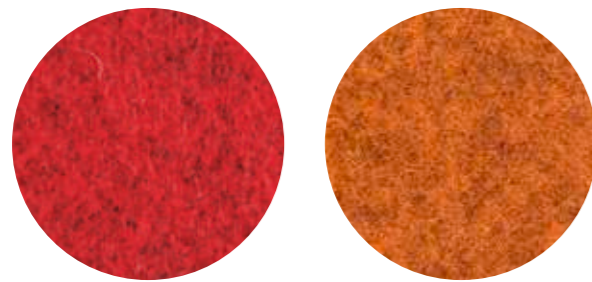
- ASTM E84 Class A Unadhered
BS 5852 Part 1
BS 5852 Crib 5 with treatment
EN 1021 - 1/2
EN 13773 Class 1 with treatment
IMO FTP Code 2010: Part 8
NF D60-013
NFPA 701 with treatment
ÖNORM B1/Q1
SN 198 898 5.3 with treatment
UNI 9175 Classe 1 IM
US CA TB 117-2013 - Compliant to
the criteria certifying the absence of
flame retardant chemicals (AB 2998)



G 24

G 114

G 116



G 21

G 22

technical specifications / specifiche tecniche

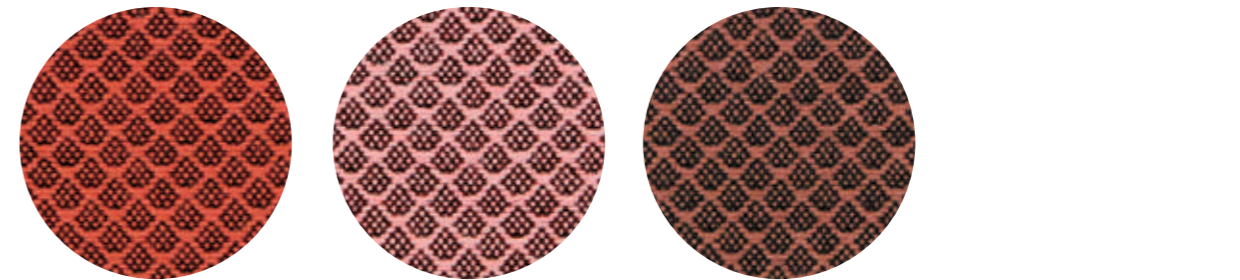


- COLLECTION / COLLEZIONE
kvadrat
G114+G116: DIVINA MD
G21+G24: DIVINA MELANGE
DESIGNER Finn Sködt
- COMPOSITION / COMPOSIZIONE
100% New Wool
- WEIGHT / GRAMMATURA
560 g/m² (16.52 oz/yd²)
- ABRASION / ABRASIONE
45.000 cycles, Martindale
(EN ISO 12947)
- PILLING
3, scale 1-5 (EN ISO 12945)

- LIGHT FASTNESS / SOLIDITÀ ALLA LUCE
for G21+G24: 6-7, scale 1-8
for G114+G116: 5-6, scale 1-8
(ISO 105-B02)
- SOUND ABSORPTION / ASSORBIMENTO ACUSTICO
folded: $\alpha_w = 0.70$ Class C (EN ISO 354)
- FLAME RESISTANCE / RESISTENZA AL FUOCO
AS/NZS 1530.3
ASTM E84 Class A Adhered
ASTM E84 Class A Unadhered with
treatment
ASTM E84 Class B Unadhered
BS 5852 Part 1
BS 5852 Crib 5 with treatment

BS 5867 Part 2 type B
EN 1021 - 1/2
EN 13501, B-s2, d0, with treatment
IMO FTP Code 2010: Part 8
NF D60-013
NFPA 260
NFPA 701 with treatment
ÖNORM B1/Q1
JIS L 1091 A-1 D
CAN ULC S109 with treatment
SN 198 898 5.3 with treatment
UNI 9175 Classe 1 IM
US CA TB 117-2013 - Compliant to
the criteria certifying the absence of
flame retardant chemicals (AB 2998)

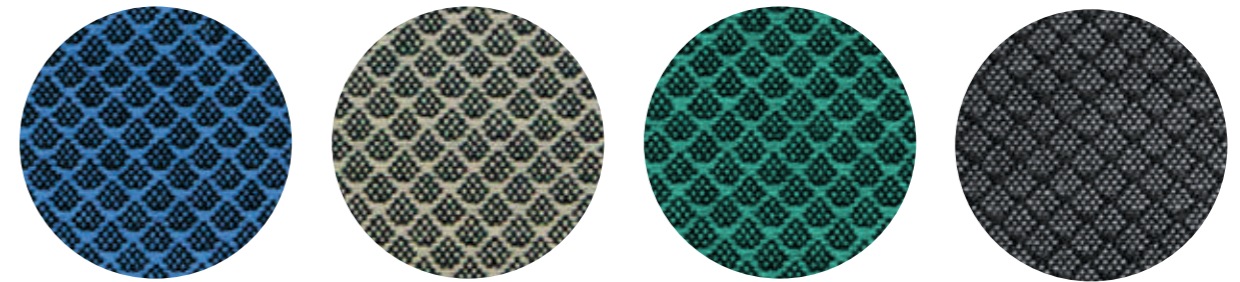
APPROVED / OMOLOGATO



G 200

G 201

G 202



G 203

G 204

G 205

G 206

technical specifications / specifiche tecniche



- COLLECTION / COLLEZIONE
kvadrat - JAALI
DESIGNER Doshi Levien
- COMPOSITION / COMPOSIZIONE
92% New wool
8% Nylon
- WEIGHT / GRAMMATURA
370 g/m² (10.91 oz/yd²)
- ABRASION / ABRASIONE
80.000 cycles, Martindale
(EN ISO 12947)

- RUBBING FASTNESS / SOLIDITÀ ALLO SFREGAMENTO
Dry and Wet 5, scale 1-5
(ISO 105-X12)
- PILLING
4, scale 1-5 (EN ISO 12945)
- LIGHT FASTNESS / SOLIDITÀ ALLA LUCE
6-7, scale 1-8 (ISO 105-B02)
- FLAME RESISTANCE / RESISTENZA AL FUOCO
AS/NZS 1530.3
AS/NZS 3837 Class 2

BS 5852 Part 1
BS 5852 Crib 5 with treatment
EN 1021 - 1/2
IMO FTP Code 2010: Part 8
NF D60-013
SN 198 898 5.3 with treatment
UNI 9175 Classe 1 IM
US CA TB 117-2013 - Compliant to
the criteria certifying the
absence of flame retardant
chemicals (AB 2998)

APPROVED / OMOLOGATO

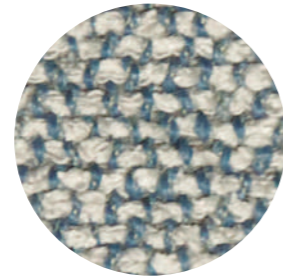




G 225



G 220



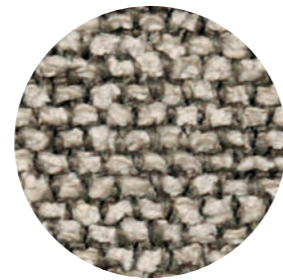
G 221



G 222



G 223



G 224

technical specifications / specifiche tecniche

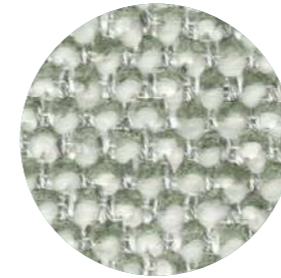


- COLLECTION / COLLEZIONE
kvadrat-SAHCO
MOSS
DESIGNER Vincent Van Duysen
- COMPOSITION / COMPOSIZIONE
52% Cotton
22% Viscose
14% Polyacrylic
6% Linen
3% Polyester
3% Nylon

- WEIGHT / GRAMMATURA
745 g/m² (21.97 oz/yd²)
- ABRASION / ABRASIONE
50.000 cycles, Martindale
(EN ISO 12947)
- RUBBING FASTNESS /
SOLIDITÀ ALLO SFREGAMENTO
Dry and Wet 4-5, scale 1-5
(ISO 105-X12)
- PILLING
4-5, scale 1-5 (EN ISO 12945)

- LIGHT FASTNESS / SOLIDITÀ ALLA LUCE
6, scale 1-8 (ISO 105-B02)
- FLAME RESISTANCE / RESISTENZA AL FUOCO
AS/NZS 3837 Class 2
BS 5852 Part 1
BS 5852 Crib 5 with treatment
EN 1021 - 1/2
IMO FTP Code 2010: Part 8
US CA TB 117-2013 - Compliant to
the criteria certifying the absence of
flame retardant chemicals (AB 2998)

- APPROVED / OMOLOGATO



G 240



G 241



G 242



G 243



G 244

technical specifications / specifiche tecniche



- COLLECTION / COLLEZIONE
kvadrat-SAHCO
SAFIRE
- COMPOSITION / COMPOSIZIONE
43% Viscose
17% Polyacrylic
15% New wool
9% Cotton
8% Polyester
8% Linen

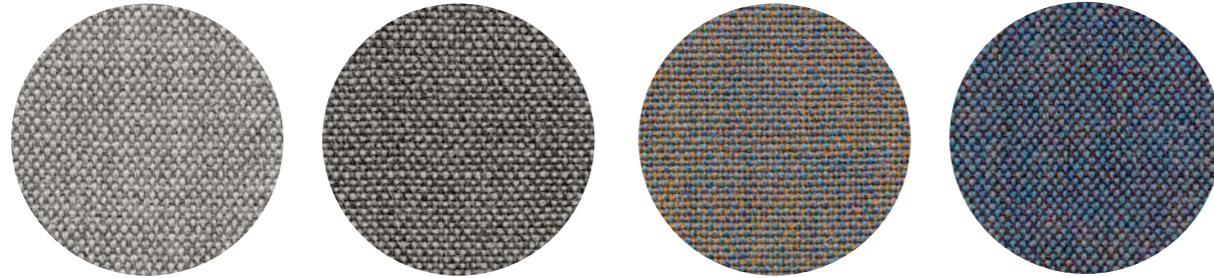
- WEIGHT / GRAMMATURA
720 g/m² (21.23 oz/yd²)
- ABRASION / ABRASIONE
40.000 cycles, Martindale
(EN ISO 12947)
- RUBBING FASTNESS /
SOLIDITÀ ALLO SFREGAMENTO
Dry and Wet 4-5, scale 1-5
(ISO 105-X12)
- PILLING
3, scale 1-5 (EN ISO 12945)

- LIGHT FASTNESS / SOLIDITÀ ALLA LUCE
5-6, scale 1-8 (ISO 105-B02)
- FLAME RESISTANCE / RESISTENZA AL FUOCO
AS/NZS 3837 Class 2
BS 5852 Part 1
BS 5852 Crib 5 with treatment
EN 1021 - 1/2
IMO FTP Code 2010: Part 8
US CA TB 117-2013 - Compliant to
the criteria certifying the absence of
flame retardant chemicals (AB 2998)

- APPROVED / OMOLOGATO



CATEGORY H / CATEGORIA H

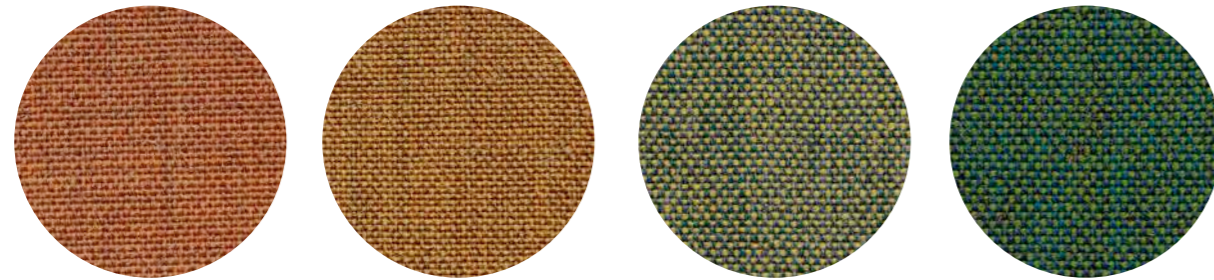


H 120

H 121

H 122

H 123



H 124

H 125

H 126

H 127

technical specifications / specifiche tecniche



• COLLECTION / COLLEZIONE

kvadrat
REMIX 3
DESIGNER Giulio Ridolfo

• COMPOSITION / COMPOSIZIONE

90% New Wool
10% Nylon

• WEIGHT / GRAMMATURA

300 g/m² (8.85 oz/yd²)

• ABRASION / ABRASIONE

100.000 cycles, Martindale
(EN ISO 12947)

• RUBBING FASTNESS /

SOLIDITÀ ALLO SFREGAMENTO
Dry and Wet 4, scale 1-5 (ISO 105-X12)

• PILLING

4, scale 1-5 (EN ISO 12945)

• LIGHT FASTNESS / SOLIDITÀ ALLA LUCE

6, scale 1-8 (ISO 105-B02)

• SOUND ABSORPTION / ASSORBIMENTO ACUSTICO

folded: $\alpha_w = 0.80$ Class B (EN ISO 354)

• FLAME RESISTANCE / RESISTENZA AL FUOCO

AS/NZS 1530.3
AS/NZS 3837 Class 2
ASTM E84 Class A Adhered
ASTM E84 Class A Unadhered

BS 5852 Part 1

BS 5852 Crib 5 with treatment
EN 1021 - 1/2
EN 13501, B-s2, d0, with treatment
GB 50222 B1 with treatment
IMO FTP Code 2010: Part 7 with treatment
IMO FTP Code 2010: Part 8
NF D60-013
NFPA 260
ÖNORM B1/Q1
SN 198 898 5.3 with treatment
UNI 9175 Classe 1 IM
US CA TB 117-2013 - Compliant to the
criteria certifying the absence of flame
retardant chemicals (AB 2998)

• APPROVED / OMOLOGATO



PRODUCT CERTIFIED
FOR LOW CHEMICAL
EMISSIONS:
UL COM/IGG
UL 2318
170166-420

CATEGORY H / CATEGORIA H



H 143

H 140

H 141

H 142

technical specifications / specifiche tecniche



• COMPOSITION / COMPOSIZIONE

35% Wool
35% Acrylic
23% Polyester
7% Cotton

• WEIGHT / GRAMMATURA

414 g/m² (12.21 oz/yd²)

• ABRASION / ABRASIONE

40.000 cycles, Martindale
(EN ISO 12947-2)

• RUBBING FASTNESS / SOLIDITÀ ALLO SFREGAMENTO

Dry 4-5 and Wet 3, scale 1-5
(ISO 105-X12)

• PILLING

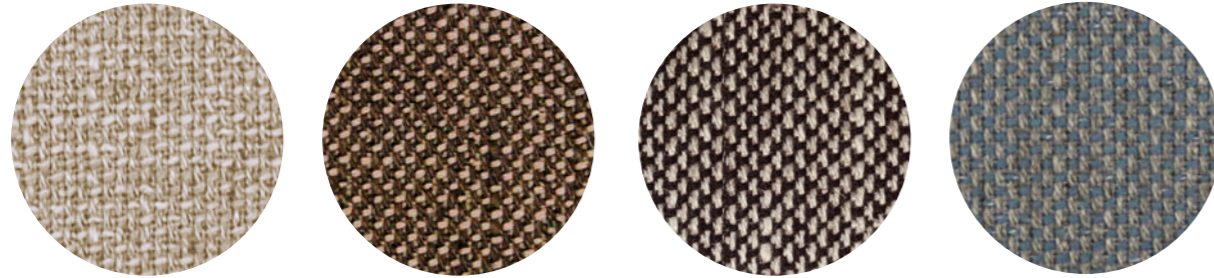
3-4, scale 1-5
(EN ISO 12945-2 to 5.000 rubs)

• LIGHT FASTNESS / SOLIDITÀ ALLA LUCE

5-6, scale 1-8 (ISO 105-B02)

• FLAME RESISTANCE / RESISTENZA AL FUOCO

EN 1021-1
BS 5852 Part 1
US CA TB 117-2013 - Compliant to
the criteria certifying the absence of
flame retardant chemicals (AB 2998)

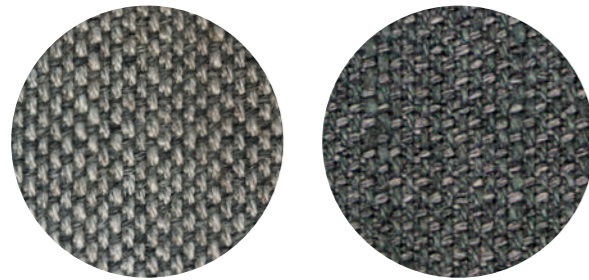


N 06

N 07

N 05

N 08



N 01

N 02

technical specifications / specifiche tecniche



• COLLECTION / COLLEZIONE
kvadrat - SUNNIVA

DESIGNERS Raf Simons & Fanny Aronsen

• COMPOSITION / COMPOSIZIONE

58% New wool
25% Viscose
8% Linen
5% Nylon
4% Polyester

• WEIGHT / GRAMMATURA
420 g/m² (12.39 oz/yd²)

• ABRASION / ABRASIONE
50.000 cycles, Martindale
(EN ISO 12947)

• RUBBING FASTNESS /
SOLIDITÀ ALLO SFREGAMENTO
Dry 4-5 and Wet 3-4, scale 1-5
(ISO 105-X12)

• PILLING
3, scale 1-5 (EN ISO 12945)

• LIGHT FASTNESS / SOLIDITÀ ALLA LUCE
5, scale 1-8 (ISO 105-B02)

• FLAME RESISTANCE / RESISTENZA AL FUOCO
AS/NZS 3837 Class 2
BS 5852 Crib 5 with treatment
EN 1021 - 1/2

EN 13501, C-s1, d0, with treatment
IMO FTP Code 2010: Part 8 with treatment
NFPA 260
US CA TB 117-2013 - Compliant to
the criteria certifying the absence of
flame retardant chemicals (AB 2998)

• APPROVED / OMOLOGATO



N 30

N 31

N 32

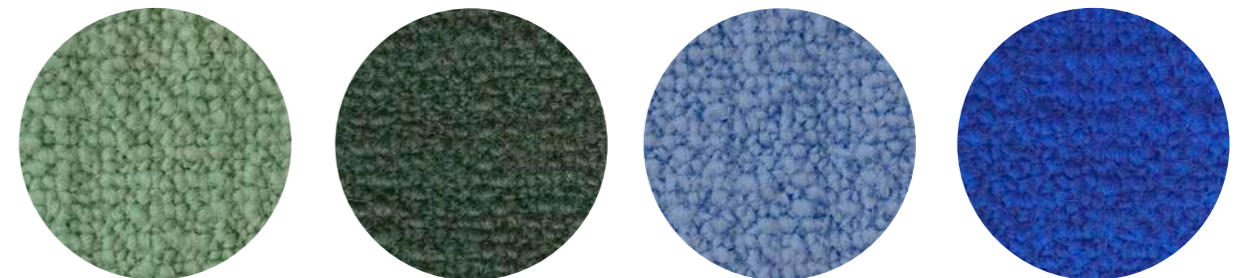


N 33

N 34

N 39

N 35



N 36

N 50

N 37

N 38

technical specifications / specifiche tecniche



• COLLECTION / COLLEZIONE

DEDAR

A PERFECT FLOWER

• COMPOSITION / COMPOSIZIONE

65% Wool
32% Cotton
3% Polyamide

• WEIGHT / GRAMMATURA

746 g/m² (22.00 oz/yd²)

• ABRASION / ABRASIONE
80.000 cycles, Martindale
(EN ISO 12947-2)

• RUBBING FASTNESS /
SOLIDITÀ ALLO SFREGAMENTO
Dry 4-5 and Wet 3-4, scale 1-5
(ISO 105-X12)

• PILLING
4-5, scale 1-5
(EN ISO 12945 to 5.000 rubs)

• LIGHT FASTNESS / SOLIDITÀ ALLA LUCE
4-5, scale 1-8 (ISO 105-B02)

• FLAME RESISTANCE / RESISTENZA AL FUOCO
BS 5852 Part 1
BS 5852 Crib 5
EN 1021 - 1/2
UNI 9175 Classe 1 IM
US CA TB 117-2013 - Compliant to
the criteria certifying the absence of
flame retardant chemicals (AB 2998)

Fabrics

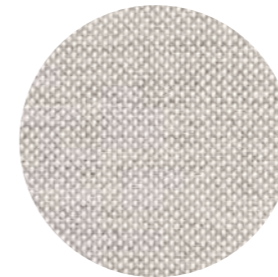
Tessuti

Outdoor

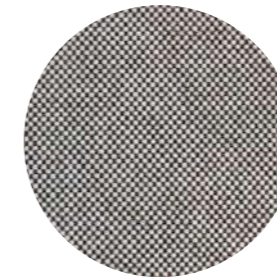
CATEGORY D / CATEGORIA D



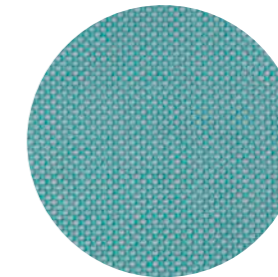
only for outdoor collections cushions / solo per cuscini delle collezioni outdoor



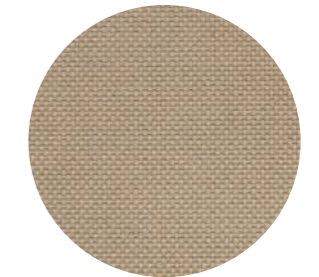
D 80



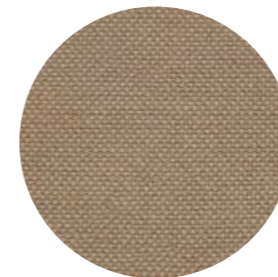
D 81



D 82



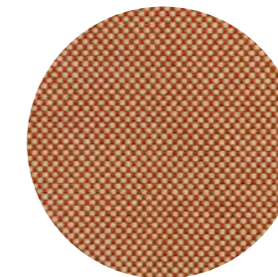
D 83



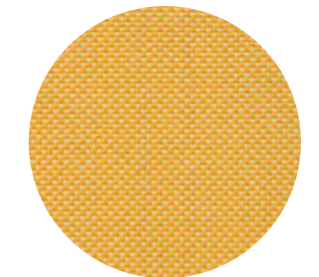
D 84



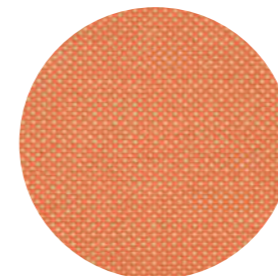
D 85



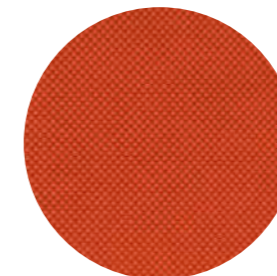
D 86



D 87



D 88



D 89

• APPROVED / OMOLOGATO



technical specifications / specifiche tecniche



- COLLECTION / COLLEZIONE
PEDRALI
FLORIDA
- COMPOSITION / COMPOSIZIONE
100% Acrylic

- WEIGHT / GRAMMATURA
290 g/m² (8.55 oz/yd²)
- ABRASION / ABRASIONE
> 20.000 cycles, Martindale
(EN ISO 5470-2)

- LIGHT FASTNESS / SOLIDITÀ ALLA LUCE
8, scale 1-8 (ISO 105-B04)
- WATER FASTNESS / SOLIDITÀ ALL'ACQUA
8, scale 1-8 (ISO 105-B04)



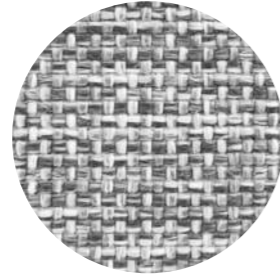
only for outdoor collections cushions / solo per cuscini delle collezioni outdoor



D 130



D 132



D 131



D 133

technical specifications / specifiche tecniche



- COMPOSITION / COMPOSIZIONE
100% Polypropylene
- WEIGHT / GRAMMATURA
470 g/m² (13.86 oz/yd²)
- ABRASION / ABRASIONE
40.000 cycles, Martindale
(EN ISO 12947-2)
- RUBBING FASTNESS / SOLIDITÀ ALLO SFREGAMENTO

- DRY CLEANING / LAVORO A SECCO
Dry 4-5 and Wet 4, scale 1-5
(ISO 105-X12)
- PILLING
4-5, scale 1-5
(EN ISO 12945-2 to 5.000 rubs)
- LIGHT FASTNESS / SOLIDITÀ ALLA LUCE
7-8, scale 1-8
(ISO 105-B02)
- WATER FASTNESS / SOLIDITÀ ALL'ACQUA

- FLAME RESISTANCE / RESISTENZA AL FUOCO
7, scale 1-8
(ISO 105-B04)
- FLAME RESISTANCE / RESISTENZA AL FUOCO
BS 5852 Part 1
US CA TB 117-2013 - Compliant to
the criteria certifying the absence of
flame retardant chemicals (AB 2998)



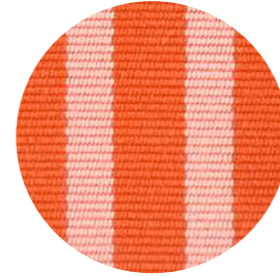
only for outdoor accessory cushions / solo per cuscini accessori outdoor



N 40



N 41



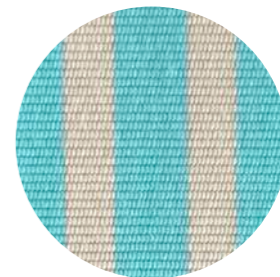
N 42



N 45



N 44



N 43

technical specifications / specifiche tecniche



- COLLECTION / COLLEZIONE
DEDAR
STRANGE LOVES
- COMPOSITION / COMPOSIZIONE
100% Acrylic
- WEIGHT / GRAMMATURA
380 g/m² (11.21 oz/yd²)

- ABRASION / ABRASIONE
24.000 cycles, Martindale
(EN ISO 12947-2)
- RUBBING FASTNESS / SOLIDITÀ ALLO SFREGAMENTO
Dry and Wet 4-5, scale 1-5
(ISO 105-X12)
- PILLING
3-4, scale 1-5
(EN ISO 12945-2 to 5.000 rubs)

- LIGHT FASTNESS / SOLIDITÀ ALLA LUCE
6-7, scale 1-8
(ISO 105-B02)
- WATER FASTNESS / SOLIDITÀ ALL'ACQUA
7-8, scale 1-8
(ISO 105-B04)
- FLAME RESISTANCE / RESISTENZA AL FUOCO
US CA TB 117-2013 - Compliant to
the criteria certifying the absence of
flame retardant chemicals (AB 2998)



only for outdoor collections cushions / solo per cuscini delle collezioni outdoor



D 140



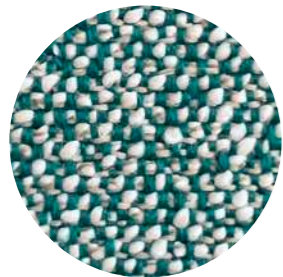
D 141



D 142



D 143



D 144

technical specifications / specifiche tecniche



- COMPOSITION / COMPOSIZIONE
100% Polypropylene
- WEIGHT / GRAMMATURA
520 g/m² (15.34 oz/yd²)
- ABRASION / ABRASIONE
62.000 cycles, Martindale
(EN ISO 13936-2)

- PILLING
4, scale 1-5
(EN ISO 12945-2 to 5.000 rubs)
- LIGHT FASTNESS / SOLIDITÀ ALLA LUCE
7, scale 1-8
(ISO 105-B02)

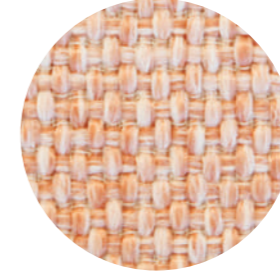
- WATER FASTNESS / SOLIDITÀ ALL'ACQUA
7, scale 1-8
(ISO 105-B04)
- FLAME RESISTANCE / RESISTENZA AL FUOCO
BS 5852 Part 0,1
US CA TB 117-2013 - Compliant to
the criteria certifying the absence of
flame retardant chemicals (AB 2998)



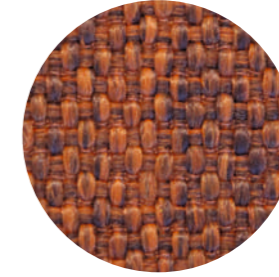
only for outdoor collections cushions / solo per cuscini delle collezioni outdoor



D 22



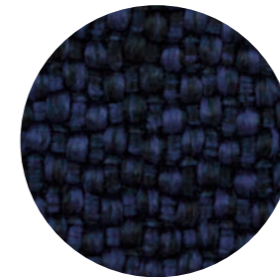
D 23



D 24



D 25



D 26

technical specifications / specifiche tecniche



- COLLECTION / COLLEZIONE
PEDRALI
BREZZA
- COMPOSITION / COMPOSIZIONE
100% Polypropylene
- WEIGHT / GRAMMATURA
614 g/m² (18.11 oz/yd²)

- ABRASION / ABRASIONE
> 30.000 cycles, Martindale
(EN ISO 12947-2)
- RUBBING FASTNESS /
SOLIDITÀ ALLO SFREGAMENTO
Dry and Wet 4-5, scale 1-5
(ISO 105-X12)
- PILLING
5, scale 1-5
(ISO 12945-2 to 5.000 cycles)

- LIGHT FASTNESS / SOLIDITÀ ALLA LUCE
7, scale 1-8 (ISO 105-B02)
- WATER FASTNESS / SOLIDITÀ ALL'ACQUA
5, scale 1-5 (ISO 105-E01)
- FLAME RESISTANCE / RESISTENZA AL FUOCO
BS 5852 Part 1
US CA TB 117-2013



only for outdoor collections cushions / solo per cuscini delle collezioni outdoor



D 110



D 111



D 112



D 113



D 114



D 115

technical specifications / specifiche tecniche



• COLLECTION / COLLEZIONE

PEDRALI

SAND

• COMPOSITION / COMPOSIZIONE

88% Polypropylene
12% Polyester

• WEIGHT / GRAMMATURA

470 g/m² (13.86 oz/yd²)

• ABRASION / ABRASIONE

30.000 cycles, Martindale
(EN ISO 12947-2)

• RUBBING FASTNESS / SOLIDITÀ ALLO SFREGAMENTO
Dry 4-5 and Wet 4, scale 1-5
(ISO 105-X12)

• PILLING
4, scale 1-5
(EN ISO 12945-2 to 5.000 rubs)

• LIGHT FASTNESS / SOLIDITÀ ALLA LUCE

7-8, scale 1-8
(ISO 105-B02)

• WATER FASTNESS / SOLIDITÀ ALL'ACQUA
7, scale 1-8
(ISO 105-B04)

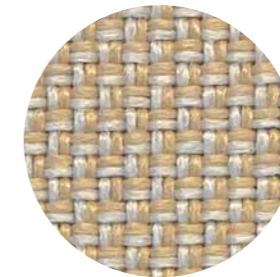
• FLAME RESISTANCE / RESISTENZA AL FUOCO
BS 5852 Part 1
US CA TB 117-2013 - Compliant to
the criteria certifying the absence of
flame retardant chemicals (AB 2998)



only for outdoor collections cushions / solo per cuscini delle collezioni outdoor



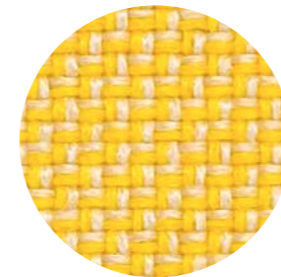
D 100



D 101



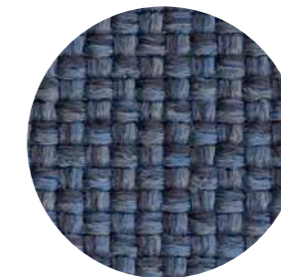
D 105



D 102



D 103



D 104

technical specifications / specifiche tecniche



• COLLECTION / COLLEZIONE

PEDRALI

ZEFIRO

• COMPOSITION / COMPOSIZIONE

100% Polypropylene

• WEIGHT / GRAMMATURA

430 g/m² (12.68 oz/yd²)

• ABRASION / ABRASIONE

50.000 cycles, Martindale
(EN ISO 12947-2)

• RUBBING FASTNESS / SOLIDITÀ ALLO SFREGAMENTO
Dry 4-5 and Wet 4-5, scale 1-5
(ISO 105-X12)

• PILLING
4-5, scale 1-5 (EN ISO 12945-2)

• LIGHT FASTNESS / SOLIDITÀ ALLA LUCE
7, scale 1-8 (ISO 105-B02)

• WATER FASTNESS / SOLIDITÀ ALL'ACQUA
>7, scale 1-8 (ISO 105-B04)

• FLAME RESISTANCE / RESISTENZA AL FUOCO
US CA TB 117-2013 - Compliant to the
criteria certifying the absence of flame
retardant chemicals (AB 2998)

Simil Leather

Finta Pelle

CATEGORY A / CATEGORIA A

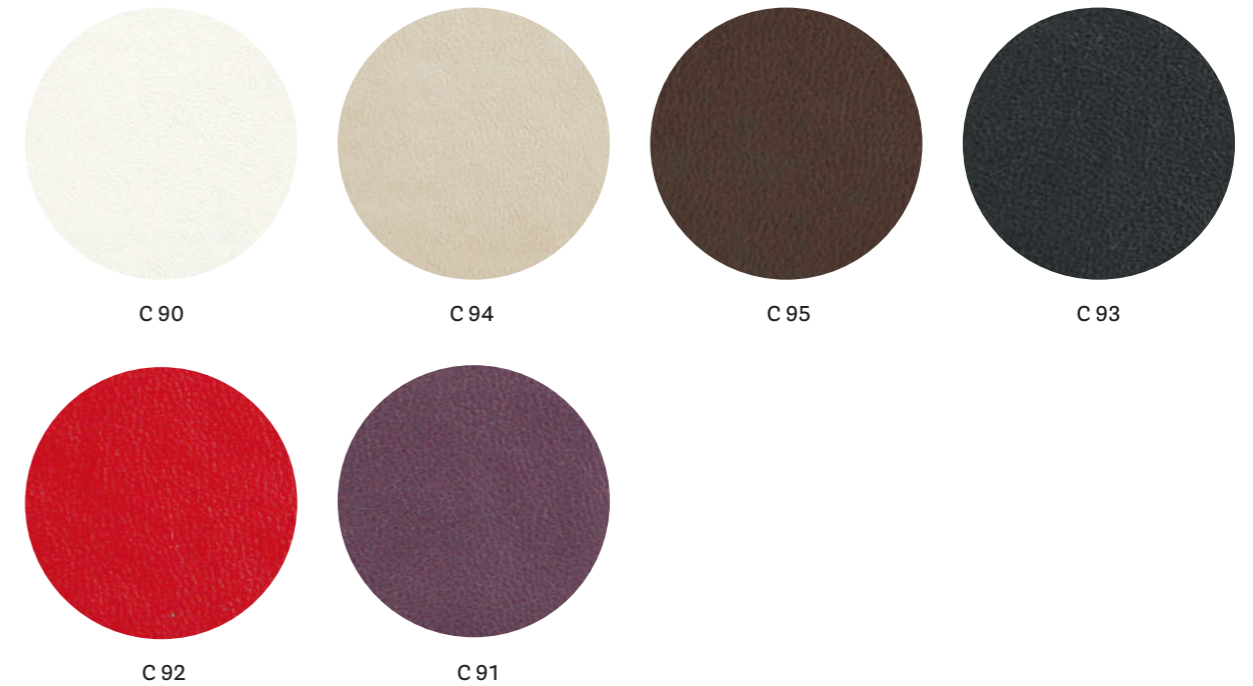


technical specifications / specifiche tecniche



- **COMPOSITION / COMPOSIZIONE**
85% PVC
15% Polyester
- **WEIGHT / GRAMMATURA**
550 g/m² (16.22 oz/yd²)
- **ABRASION / ABRASIONE**
50.000 cycles, Martindale
(EN ISO 12947-2)
- **RUBBING FASTNESS / SOLIDITÀ ALLO SFREGAMENTO**
Dry and Wet 5, scale 1-5
(ISO 105-X12)
- **LIGHT FASTNESS / SOLIDITÀ ALLA LUCE**
6, scale 1-8
(ISO 105-B02)
- **FLAME RESISTANCE / RESISTENZA AL FUOCO**
BS 5852 Part 1
US CA TB 117-2013 - Compliant to
the criteria certifying the absence of
flame retardant chemicals (AB 2998)

CATEGORY C / CATEGORIA C



technical specifications / specifiche tecniche



- **COMPOSITION / COMPOSIZIONE**
72% PVC
25% Cotton
3% Polyurethane
- **WEIGHT / GRAMMATURA**
600 g/m² (17.70 oz/yd²)
- **ABRASION / ABRASIONE**
100.000 cycles, Martindale
(EN ISO 5470-2)
- **RUBBING FASTNESS / SOLIDITÀ ALLO SFREGAMENTO**
Dry and Wet 5, scale 1-5
(ISO 105-X12)
- **LIGHT FASTNESS / SOLIDITÀ ALLA LUCE**
6-7, scale 1-8 (ISO 105-B02)
- **FLAME RESISTANCE / RESISTENZA AL FUOCO**
BS 5852 Part 1
EN 1021 - 1/2
IMO res. A.652 (16)
UNI 9175 Classe 1 IM
US CA TB 117-2013



technical specifications / specifiche tecniche



- COMPOSITION / COMPOSIZIONE
85% PVC
15% Cotton
- WEIGHT / GRAMMATURA
830 g/m² (24.48 oz/yd²)
- ABRASION / ABRASIONE
150.000 cycles, Martindale
(EN ISO 5470-2)

- LIGHT FASTNESS / SOLIDITÀ ALLA LUCE
≥6, scale 1-8 (ISO 105-B02)
- FLAME RESISTANCE / RESISTENZA AL FUOCO
DIN 4102-1 B2
BS 5852 Crib 5
EN 1021 - 1/2
EN 13501-1, C-s3, d0
FAR 25.853 App F Part 1

IMO res. A.652
NF D60-013 AM18
NF P92 507 M1
NY/NJ - Port Authority
UFAC Fabric Class 1
German fire standard B1
(except C12 and C22)
US CA TB 133
US CA TB 117-2013

- APPROVED / OMOLOGATO



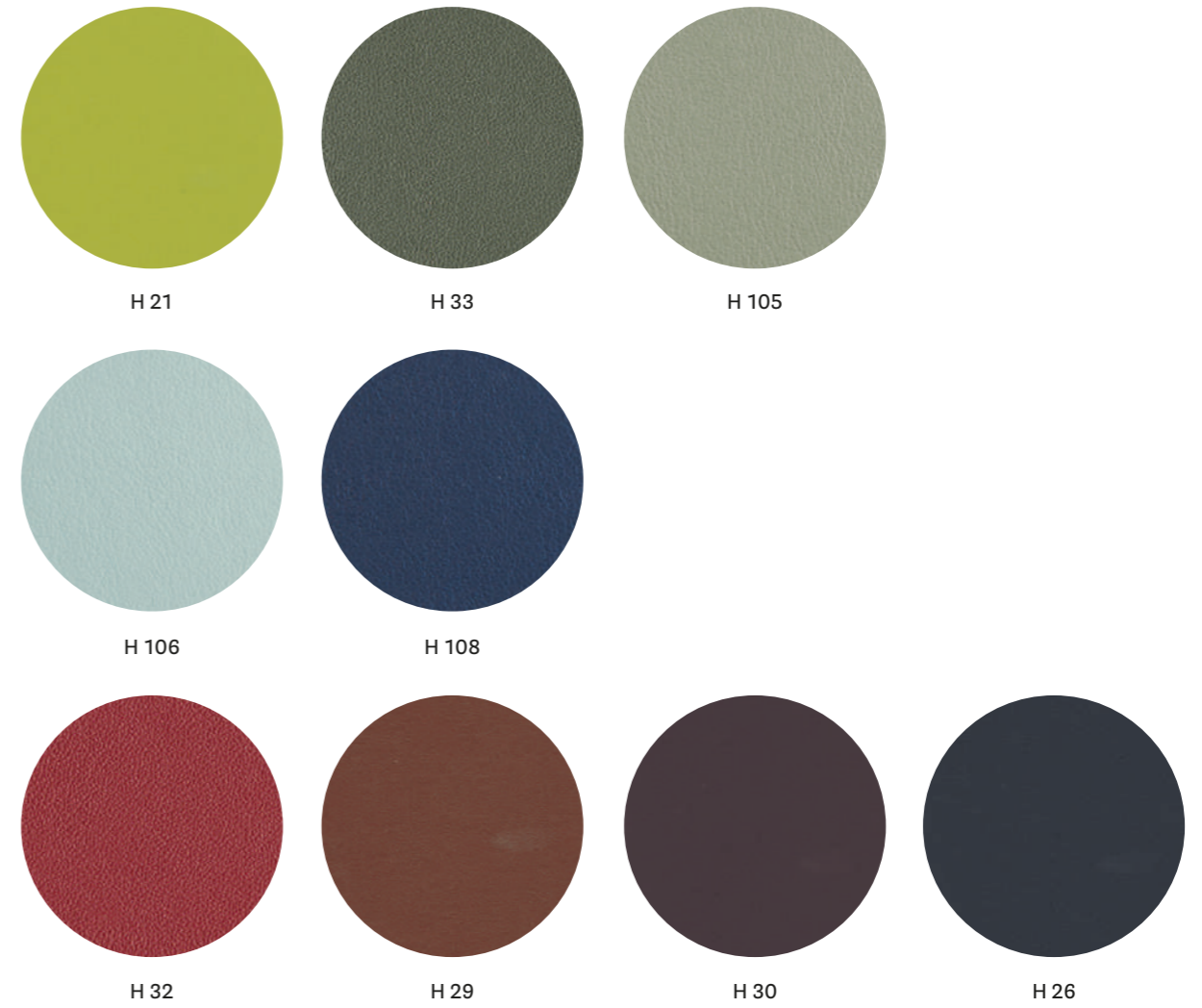
technical specifications / specifiche tecniche



- COMPOSITION / COMPOSIZIONE
76% PVC
22% Polyester
2% Polyurethane
- WEIGHT / GRAMMATURA
540 g/m² (15.93 oz/yd²)

- ABRASION / ABRASIONE
60.000 cycles, Martindale
(EN ISO 5470-2)
- RUBBING FASTNESS / SOLIDITÀ ALLO SFREGAMENTO
Dry and Wet 5, scale 1-5
(ISO 105-X12)

- LIGHT FASTNESS / SOLIDITÀ ALLA LUCE
6-7, scale 1-8 (ISO 105-B02)
- FLAME RESISTANCE / RESISTENZA AL FUOCO
BS 5852 Part 1
EN 1021 - 1/2
UNI 9175 Classe 1 IM
US CA TB 117-2013



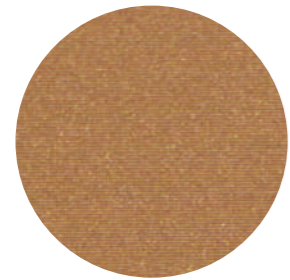
technical specifications / specifiche tecniche



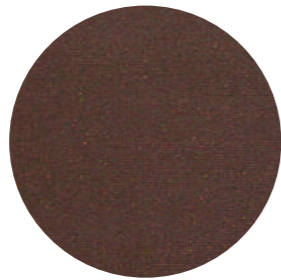
- COMPOSITION / COMPOSIZIONE
63% Polyurethane
29% Cotton
8% Polyester
- WEIGHT / GRAMMATURA
480 g/m² (14.16 oz/yd²)

- ABRASION / ABRASIONE
150.000 cycles, Martindale
(EN ISO 12947-2)
- LIGHT FASTNESS / SOLIDITÀ ALLA LUCE
5-6, scale 1-8 (ISO 105-B02)
- FLAME RESISTANCE / RESISTENZA AL FUOCO
BS 5852 Part 1

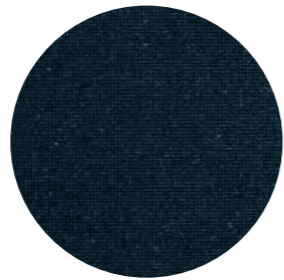
- BS 5852 Crib 5
- EN 1021 - 1/2
- IMO FTP Code 2010
- ÖNORM B 3825
- UNI 9175 Classe 1 IM
- US CA TB 117-2013 - Compliant to the criteria certifying the absence of flame retardant chemicals (AB 2998)



C 62



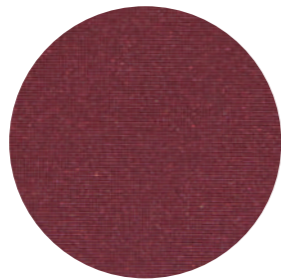
C 63



C 64



C 60



C 61

technical specifications / specifiche tecniche



- **Metallic effect simil-leather**
Finta pelle effetto metallizzato

- **COMPOSITION / COMPOSIZIONE**
72% PVC
25% Cotton
3% Polyurethane

- **WEIGHT / GRAMMATURA**
600 g/m² (17.70 oz/yd²)

- **ABRASION / ABRASIONE**
100.000 cycles, Martindale
(EN ISO 5470-2)

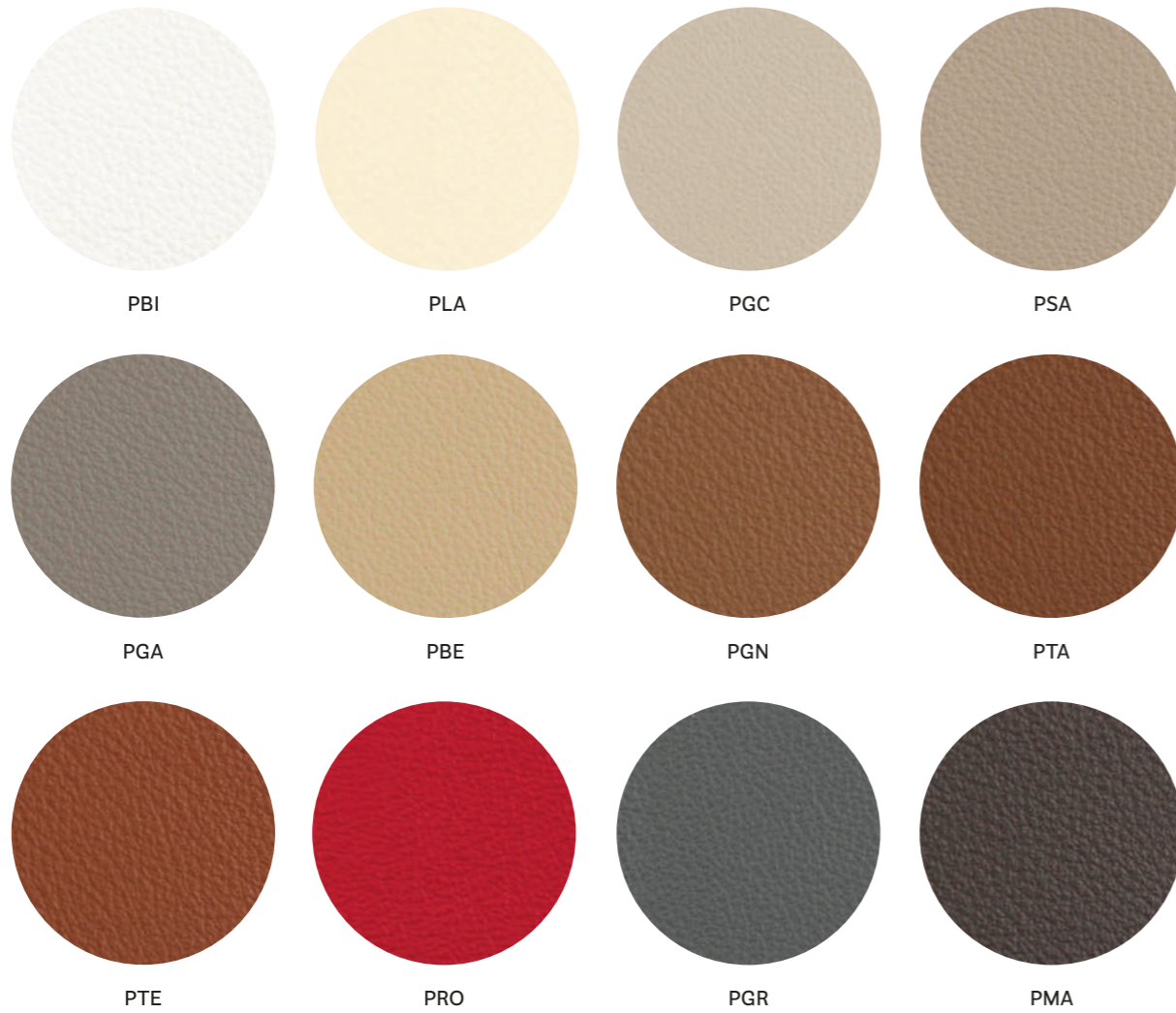
- **RUBBING FASTNESS / SOLIDITÀ ALLO SFREGAMENTO**
Dry and Wet 5, scale 1-5
(ISO 105-X12)

- **LIGHT FASTNESS / SOLIDITÀ ALLA LUCE**
6-7, scale 1-8 (ISO 105-B02)

- **FLAME RESISTANCE / RESISTENZA AL FUOCO**
BS 5852 Part 1
EN 1021 – 1/2
IMO res. A.652 (16)
UNI 9175 Classe 1 IM
US CA TB 117-2013

Leather Pelle

CATEGORY P / CATEGORIA P



PNE

technical specifications / specifiche tecniche

- COLLECTION / COLLEZIONE
 LINEA
- COMPOSITION / COMPOSIZIONE
Mid grain leather
Pelle mezzo fiore
- WEIGHT / GRAMMATURA
0.9-1.1 mm (0.035-0.043 in)
- RUBBING FASTNESS /
SOLIDITÀ ALLO SFREGAMENTO
**Dry (500 Cycles) and
Wet (250 Cycles) ≥4**
(EN ISO 11640:1998)

- LIGHT FASTNESS /
SOLIDITÀ ALLA LUCE
≥5 (ISO 105 B02) (MET.5)
- FLAME RESISTANCE /
RESISTENZA AL FUOCO
**BS 5852:1979
BS EN 1021-1-2:2006
US CA TB 117-2013 -
Compliant to the criteria
certifying the absence
of flame retardant
chemicals (AB 2998)**

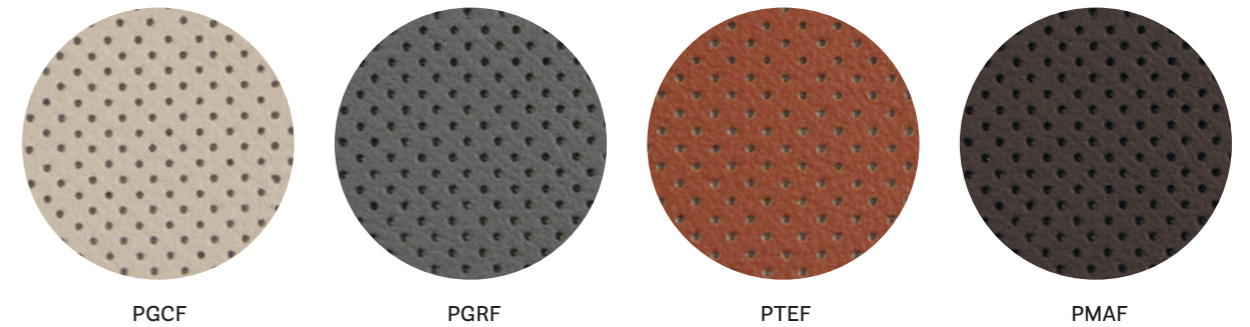
cleaning / lavaggio

Clean with a damp cloth using water. Do not use detergents, solvents, bleached, abrasives.
Pulire con un panno umido d'acqua. Non usare detersivi, solventi, candeggianti, abrasivi.

- APPROVED / OMOLOGATO



CATEGORY P / CATEGORIA P



technical specifications / specifiche tecniche

- COLLECTION / COLLEZIONE
 LINEA
- COMPOSITION / COMPOSIZIONE
Perforated mid grain leather
Pelle mezzo fiore traforata
- WEIGHT / GRAMMATURA
0.9-1.1 mm (0.035-0.043 in)
- RUBBING FASTNESS /
SOLIDITÀ ALLO SFREGAMENTO
**Dry (500 Cycles) and
Wet (250 Cycles) ≥4**
(EN ISO 11640:1998)

- LIGHT FASTNESS /
SOLIDITÀ ALLA LUCE
≥5 (ISO 105 B02) (MET.5)
- FLAME RESISTANCE /
RESISTENZA AL FUOCO
**BS 5852:1979
BS EN 1021-1-2:2006**

cleaning / lavaggio

Clean with a damp cloth using water. Do not use detergents, solvents, bleached, abrasives.
Pulire con un panno umido d'acqua. Non usare detersivi, solventi, candeggianti, abrasivi.

- APPROVED / OMOLOGATO



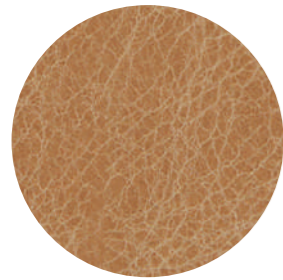
only for collections / solo per collezioni



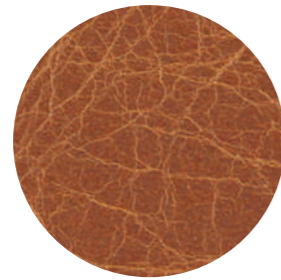
Vic / Vic Metal

Inner part of the back, upper part of the seat.
Lato interno dello schienale e parte superiore del sedile.

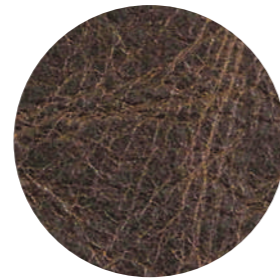
CATEGORY P / CATEGORIA P



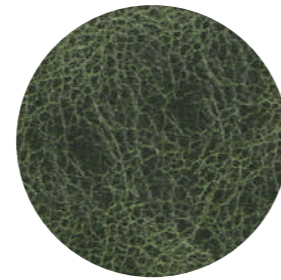
PBS



PCO



PMS



PVE

technical specifications / specifiche tecniche

• COLLECTION / COLLEZIONE



• COMPOSITION / COMPOSIZIONE

Vintage mid grain leather
Pelle mezzo fiore anticata

• **Leather non-homogenous shade (vintage effect)**

Pelle in tonalità non omogenea (effetto vintage)

• WEIGHT / GRAMMATURA

0.8-1.0 mm (0.031-0.039 in)

• RUBBING FASTNESS / SOLIDITÀ ALLO SFREGAMENTO

Dry (50 Cycles) and Wet (20 Cycles) ≥3 (EN ISO 11640:1998)

• LIGHT FASTNESS / SOLIDITÀ ALLA LUCE

≥3 (ISO 105-B02) (MET.5)

• FLAME RESISTANCE / RESISTENZA AL FUOCO

**BS 5852:1979
BS EN 1021-1-2:2006**

cleaning / lavaggio

Clean with warm and damp cloth. Do not use detergents, solvents, bleached, abrasives.

Pulire con acqua calda e un panno umido. Non usare detersivi, solventi, candeggianti, abrasivi.

only for collections / solo per collezioni



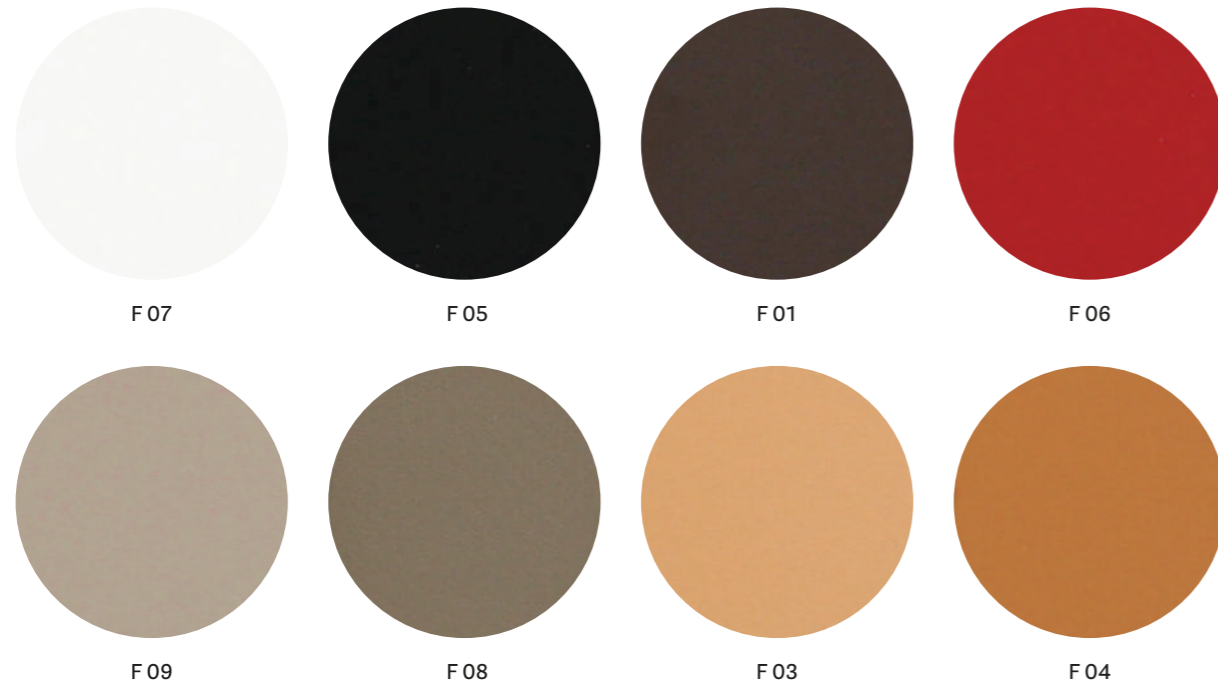
Malmö

Inga

Hard leather

Cuoio

CATEGORY F / CATEGORIA F



technical specifications / specifiche tecniche

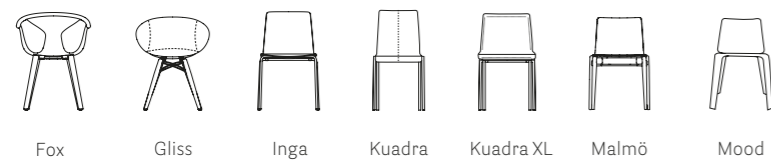
- **COMPOSITION / COMPOSIZIONE**
Genuine hard leather, tanned with vegetable substances.
Cuoio naturale, conciato con sostanze vegetali.
- **WEIGHT / GRAMMATURA**
2 mm (0.079 in)

- **RUBBING FASTNESS / SOLIDITÀ ALLO SFREGAMENTO**
Satisfactory up to maximum 700 abrasions in humid environment and 1000 abrasions in dry environment.
Soddisfacente sino a max 700 abrasioni all'umido e 1000 abrasioni al secco.

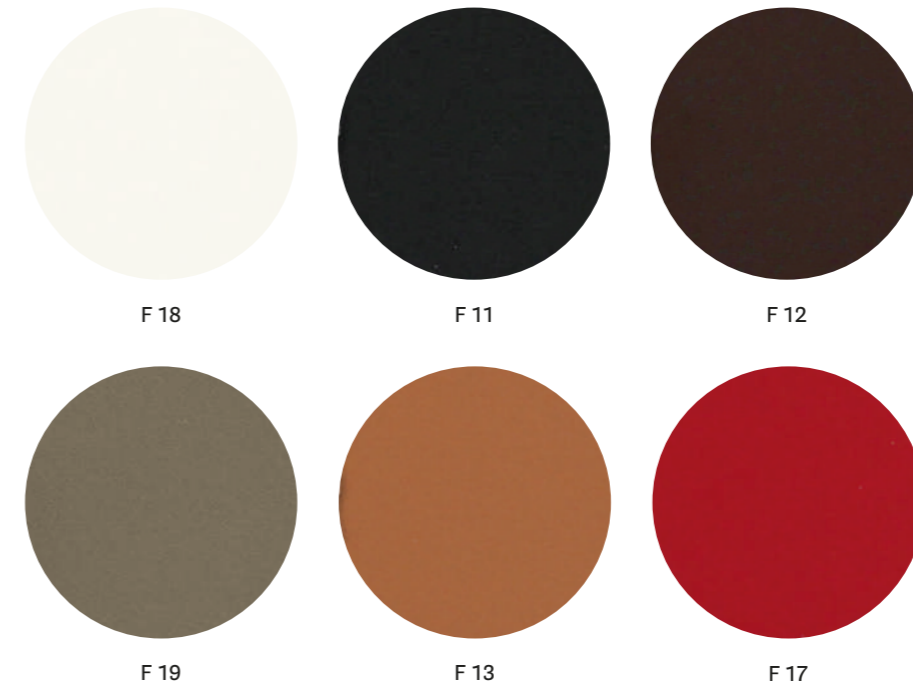
cleaning / lavaggio

Clean with a damp cloth using water.
Pulire con un panno umido d'acqua.

only for collections / solo per collezioni



CATEGORY F / CATEGORIA F



technical specifications / specifiche tecniche

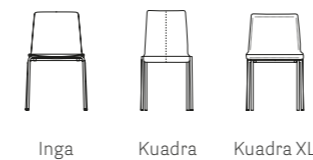
- **COMPOSITION / COMPOSIZIONE**
Regenerated hard leather. Tanned leather cuttings and shavings linked with natural rubber latex.
Cuoio rigenerato. Ritagli e rasatura di cuoio conciato legati con lattice di gomma naturale.
- **WEIGHT / GRAMMATURA**
2 mm (0.079 in)

- **RUBBING FASTNESS / SOLIDITÀ ALLO SFREGAMENTO**
Dry and wet >1000 (UNI EN ISO 11640)
- **LIGHT FASTNESS / SOLIDITÀ ALLA LUCE**
4-5 Xenotest Method
- **FLAME RESISTANCE / RESISTENZA AL FUOCO**
BS EN 1021 1&2
BS 5852 Part 1
US CA TB 117 E Part 1

cleaning / lavaggio

Clean with a damp cloth using water.
Pulire con un panno umido d'acqua.

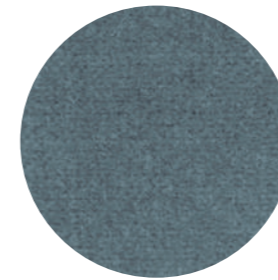
only for collections / solo per collezioni



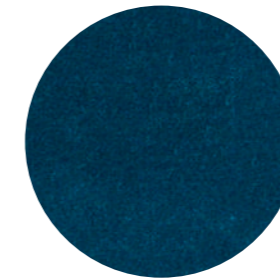
Velvet

Velluto

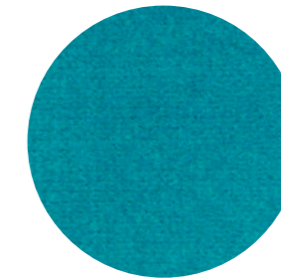
CATEGORY E / CATEGORIA E



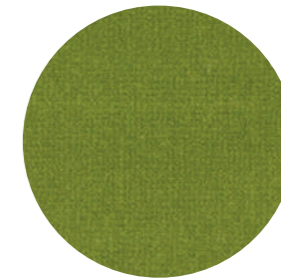
E 04



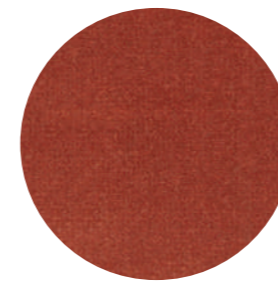
E 03



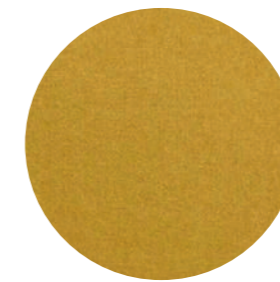
E 05



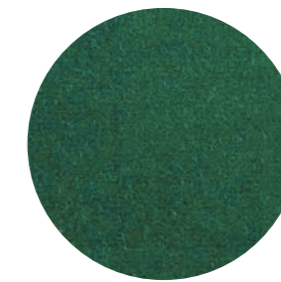
E 02



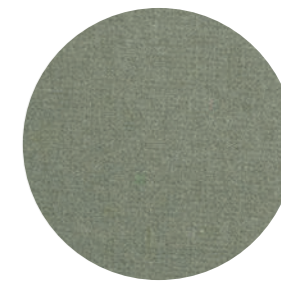
E 01



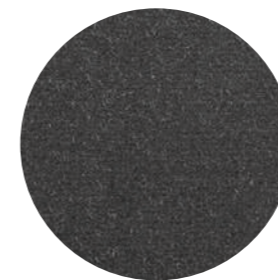
E 06



E 07



E 08



E 09

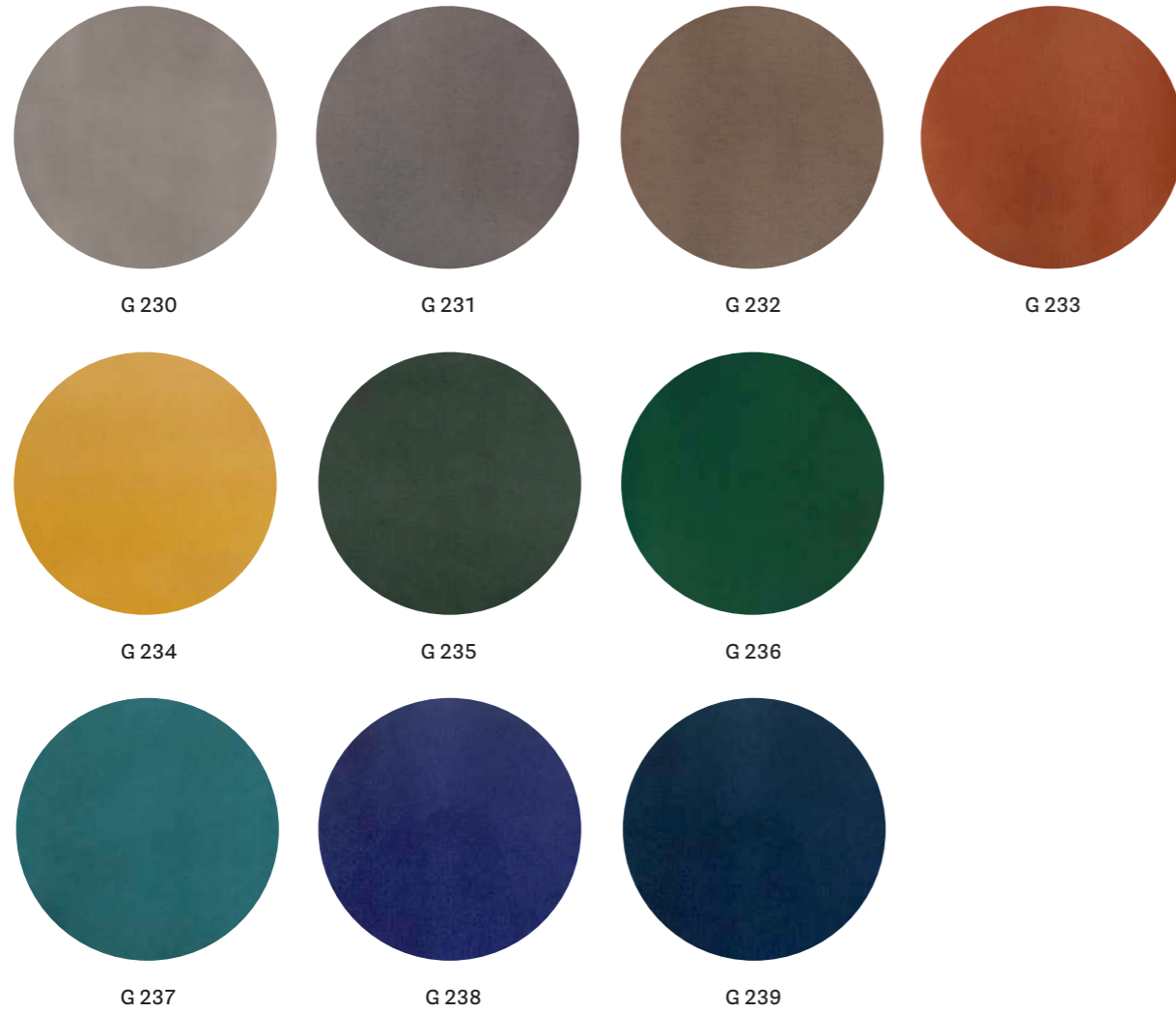
technical specifications / specifiche tecniche



- COLLECTION / COLLEZIONE
DEDAR
ADAMO & EVA
- COMPOSITION / COMPOSIZIONE
100% Cotton

- WEIGHT / GRAMMATURA
450 g/m² (13.27 oz/yd²)
- ABRASION / ABRASIONE
50.000 cycles, Martindale (EN ISO 12947-2)
- RUBBING FASTNESS / SOLIDITÀ ALLO SFREGAMENTO

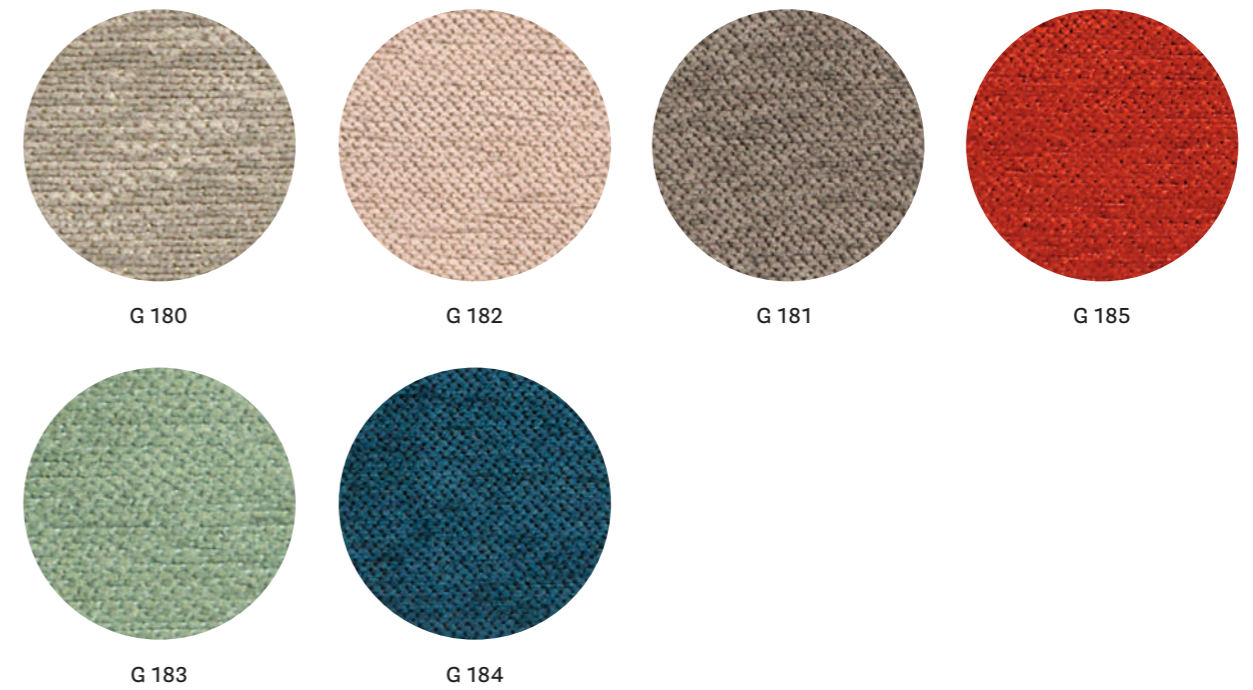
- Dry 4-5 and Wet 3-5, scale 1-5 (ISO 105-X12)
- LIGHT FASTNESS / SOLIDITÀ ALLA LUCE
4-6, scale 1-8 (ISO 105-B02)
- FLAME RESISTANCE / RESISTENZA AL FUOCO
BS 5852 Part 1



technical specifications / specifiche tecniche



- COMPOSITION / COMPOSIZIONE
100% Cotton
- WEIGHT / GRAMMATURA
540 g/m² (15.93 oz/yd²)
- ABRASION / ABRASIONE
70.000 cycles, Martindale (EN ISO 12947-2)
- RUBBING FASTNESS / SOLIDITÀ ALLO SFREGAMENTO
Dry and Wet 4-5, scale 1-5 (ISO 105-X12)
- PILLING
5, scale 1-5 (EN ISO 12945-2)
- LIGHT FASTNESS / SOLIDITÀ ALLA LUCE
4-5, scale 1-8 (ISO 105-B02)
- SOUND ABSORPTION / ASSORBIMENTO ACUSTICO
folded: $\alpha_w = 0.75$ (EN ISO 354)
- FLAME RESISTANCE / RESISTENZA AL FUOCO
BS 5852 Part 1
US CA TB 117-2013 - Compliant to the criteria certifying the absence of flame retardant chemicals (AB 2998)



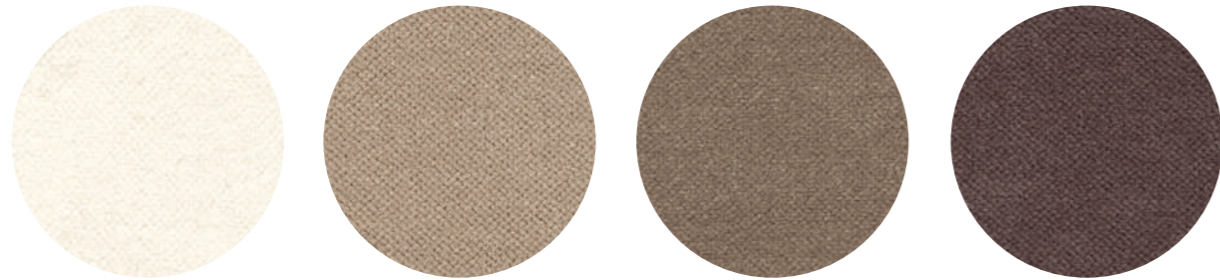
technical specifications / specifiche tecniche



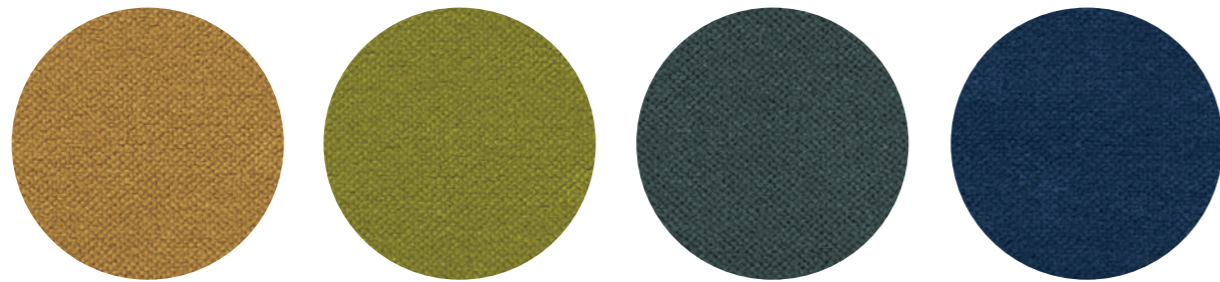
- COLLECTION / COLLEZIONE
kvadrat - STILL
DESIGNER Georgina Wright
- COMPOSITION / COMPOSIZIONE
100% TREVIRA CS®
- WEIGHT / GRAMMATURA
457 g/m² (13.48 oz/yd²)
- ABRASION / ABRASIONE
50.000 cycles, Martindale (EN ISO 12947)
- RUBBING FASTNESS / SOLIDITÀ ALLO SFREGAMENTO
Dry and Wet 4-5, scale 1-5 (ISO 105-X12)
- PILLING
4-5, scale 1-5 (EN ISO 12945)
- LIGHT FASTNESS / SOLIDITÀ ALLA LUCE
6, scale 1-8 (ISO 105-B02)
- SOUND ABSORPTION / ASSORBIMENTO ACUSTICO
folded: $\alpha_w = 0.85$ Class B (EN ISO 354)
- FLAME RESISTANCE / RESISTENZA AL FUOCO
ASTM E84 Class A Unadhered
AS/NZS 3837 Class 1
BS 5852 Part 1
BS 5852 Crib 5
BS 5867 Part 2 type B
DIN 4102 B1
- EN 1021 - 1/2
EN 13501-1, B-s1, d0
GB 8624 B1
IMO FTP Code 2010: Part 8
IMO FTP Code 2010: Part 5
NF D60-013
NF P92 507 M1
ÖNORM B1/Q1
CAN ULC S102
SN 198 898 5.2
UNI 9177 Classe 1
UNI 9175 Classe 1 IM
US CA TB 117-2013



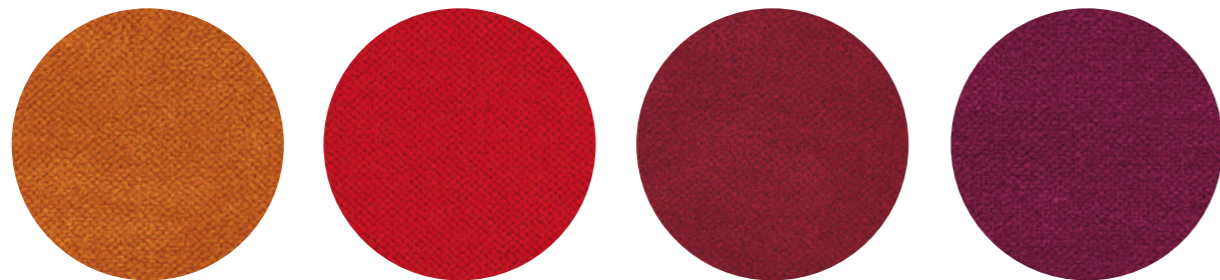
CATEGORY H / CATEGORIA H



H 40 H 44 H 45 H 46



H 43 H 49 H 51 H 50



H 48 H 53 H 42 H 47



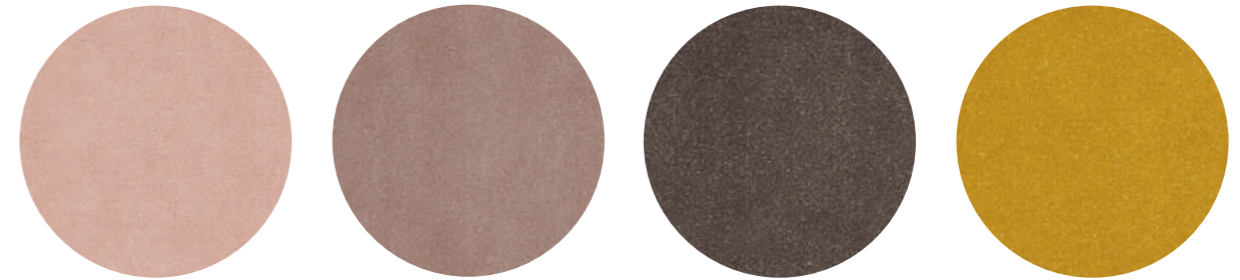
H 41

technical specifications / specifiche tecniche

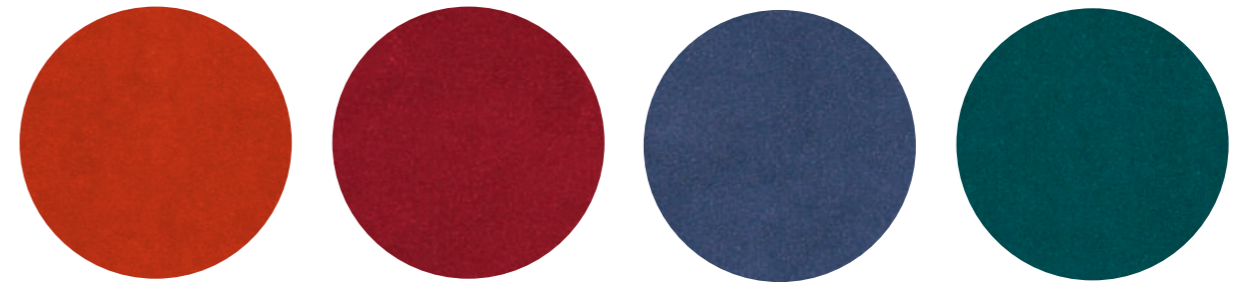


- COMPOSITION / COMPOSIZIONE
100% TREVIRA CS®
- WEIGHT / GRAMMATURA
470 g/m² (13.86 oz/yd²)
- ABRASION / ABRASIONE
190.000 cycles, Martindale
(EN ISO 12947-2)
- RUBBING FASTNESS / SOLIDITÀ ALLO SFREGAMENTO
Dry and Wet 4-5, scale 1-5
(ISO 105-X12)
- PILLING
5, scale 1-5 (EN ISO 12945-2)
- LIGHT FASTNESS / SOLIDITÀ ALLA LUCE
5, scale 1-8 (ISO 105-B02)
- SOUND ABSORPTION / ASSORBIMENTO ACUSTICO
folded: $\alpha_w = 0.70$ (EN ISO 354)
- FLAME RESISTANCE / RESISTENZA AL FUOCO
BS 5852 Part 0,1
DIN 4102 B1
EN 1021 - 1/2
IMO MSC 307(88) Annex 1 Part 7-8
NF P92 503-507 M1
NFPA 260
UNI 9177 Classe 1
UNI 9175 Classe 1 IM
US CA TB 117-2013

CATEGORY N / CATEGORIA N



N 20 N 21 N 22 N 23



N 24 N 25 N 26 N 27

technical specifications / specifiche tecniche



- COLLECTION / COLLEZIONE
kvadrat-SAHCO
BALBOA
- COMPOSITION / COMPOSIZIONE
100% Polyester FR
- WEIGHT / GRAMMATURA
685 g/m² (20.20 oz/yd²)
- ABRASION / ABRASIONE
100.000 cycles,
Martindale (EN ISO 12947)
- RUBBING FASTNESS / SOLIDITÀ
ALLO SFREGAMENTO
Dry 5 and Wet 4-5,
scale 1-5 (ISO 105-X12)
- PILLING
4, scale 1-5 (EN ISO 12945)
- LIGHT FASTNESS / SOLIDITÀ ALLA LUCE
5-6, scale 1-8 (ISO 105-B02)
- SOUND ABSORPTION / ASSORBIMENTO ACUSTICO
folded: $\alpha_w = 0.80$ Class B
(EN ISO 354)
- FLAME RESISTANCE / RESISTENZA AL FUOCO
AS/NZS 1530.3
ASTM E84 Class A Unadhered
AS/NZS 3837 Class 1
BS 5852 Crib 5
BS 5867 Part 2 type B
- DIN 4102 B1
EN 1021 - 1/2
EN 13501-1, B-s1, d0
EN 13773 Class 1
GB 8624 B1
IMO FTP Code 2010: Part 8
NFPA 260
NFPA 701
NF P92 507 M1
CAN ULC S102 S109
SN 198 898 5.2
UNI 9175 Classe 1 IM
US CA TB 117-2013



Powder coated cast-iron, steel and aluminium

Ghisa, acciaio
e alluminio verniciati

Indoor

TEXTURED MATT / GOFFRATA OPACA



BI100
White / Bianco

BI200
White / Bianco

BE100
Beige / Beige

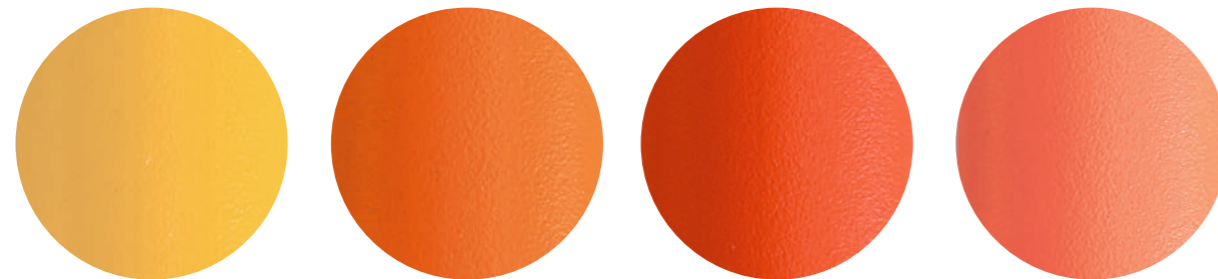
BE200
Beige / Beige



SA100
Sand / Sabbia

SA200
Sand / Sabbia

RA100
Pink / Rosa



GI100
Yellow / Giallo

AR200
Orange / Arancio

AR400
Orange / Arancio

AR500
Orange / Arancio



RO400
Red / Rosso

RO200
Red / Rosso

RO300
Red / Rosso

TEXTURED MATT / GOFFRATA OPACA



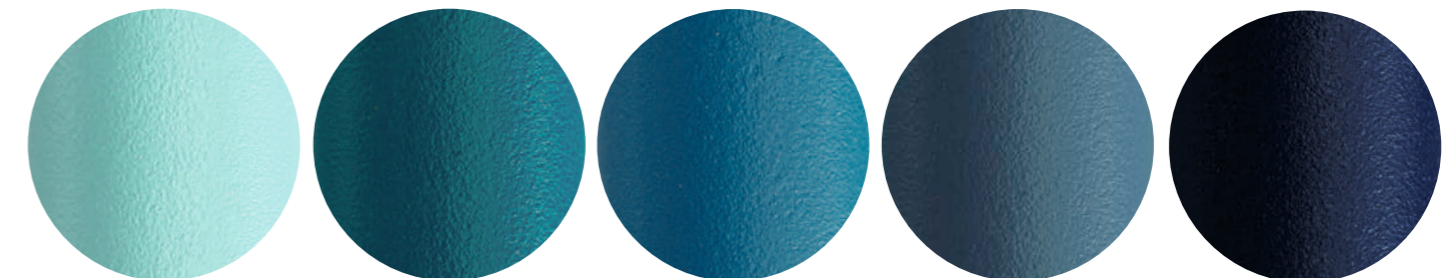
MI100
Honey / Miele

TE
Terracotta / Terracotta

TE200
Terracotta / Terracotta

RU
Rust / Ruggine

MG
Brown / Marrone



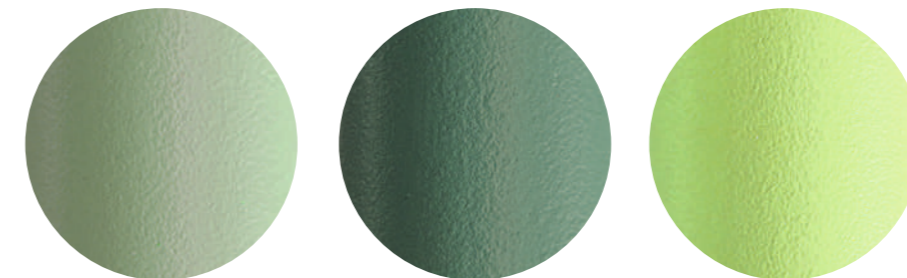
AZ100
Light blue / Azzurro

BL500
Blue / Blu

BL300
Blue / Blu

BL600
Blue / Blu

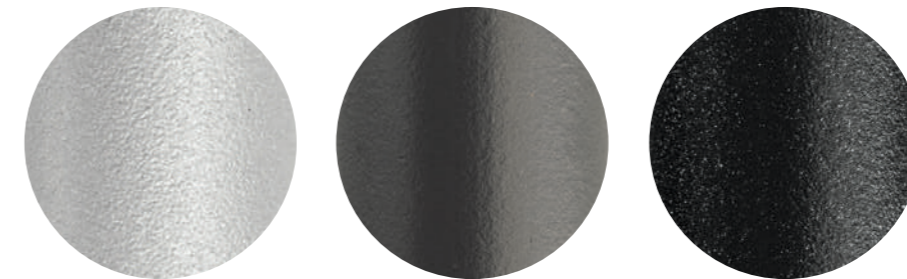
BL400
Blue / Blu



VE100
Sage green / Verde salvia

VE600
Green / Verde

VE400
Green / Verde

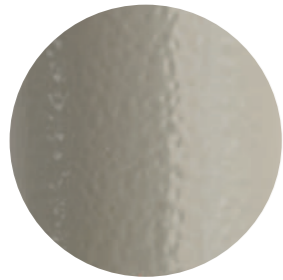


AG
Aluminium / Alluminio

GA
Anthracite grey / Grigio antracite

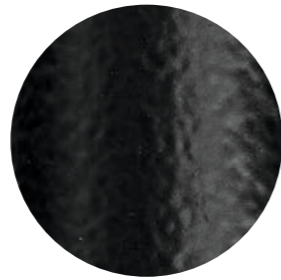
GN
Natural grey / Grigio naturale

HAMMERED GLOSSY / BUCCIATA LUCIDA



SA300
Sand / Sabbia

HAMMERED MATT / BUCCIATA OPACA

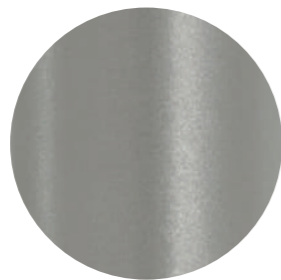


_NERO
Black / Nero

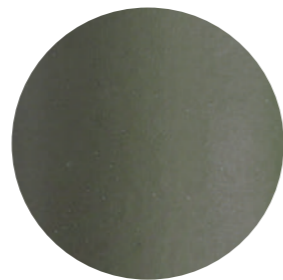
SMOOTH MATT / LISCIA OPACA



BI300
White / Bianco

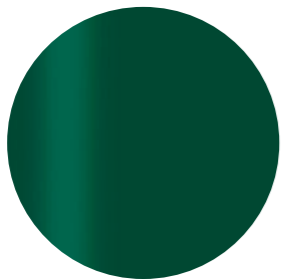


9007
Aluminium / Alluminio

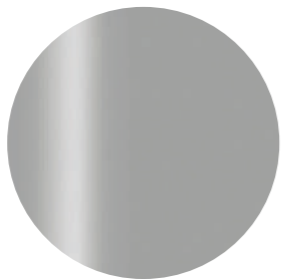


VE300
Forest green / Verde bosco
Soft touch

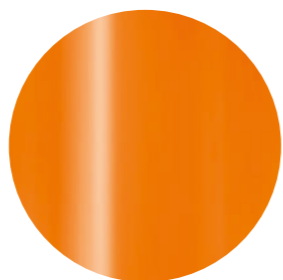
SMOOTH GLOSSY / LISCIA LUCIDA



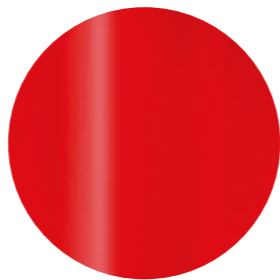
6005
Green / Verde



AL
Aluminium / Alluminio



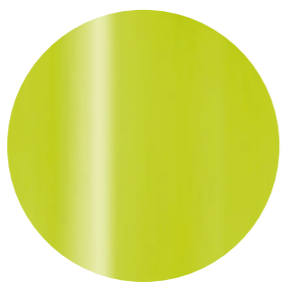
AR300
Orange / Arancio



RO100
Red / Rosso



BI400
White / Bianco



VE200
Green / Verde

Outdoor

TEXTURED MATT / GOFFRATA OPACA



BI100E
White / Bianco



BI200E
White / Bianco



BE100E
Beige / Beige



BE200E
Beige / Beige



SA100E
Sand / Sabbia



SA200E
Sand / Sabbia



RA100E
Pink / Rosa



GI100E
Yellow / Giallo



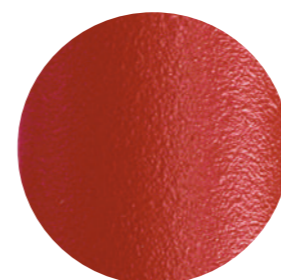
AR200E
Orange / Arancio



AR400E
Orange / Arancio



AR500E
Orange / Arancio



RO200E
Red / Rosso



RO400E
Red / Rosso



RO300E
Red / Rosso

TEXTURED MATT / GOFFRATA OPACA



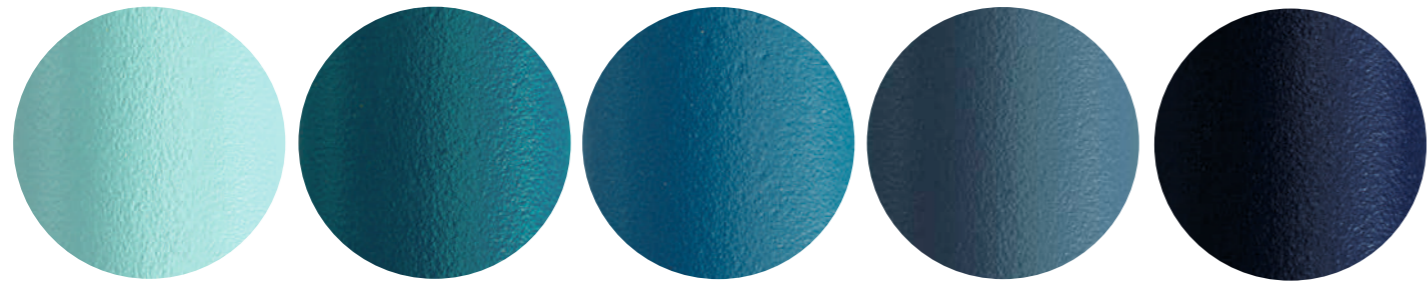
MI100E
Honey / Miele

TEE
Terracotta / Terracotta

TE200E
Terracotta / Terracotta

RUE
Rust / Ruggine

MGE
Brown / Marrone



AZ100E
Light blue / Azzurro

BL500E
Blue / Blu

BL300E
Blue / Blu

BL600E
Blue / Blu

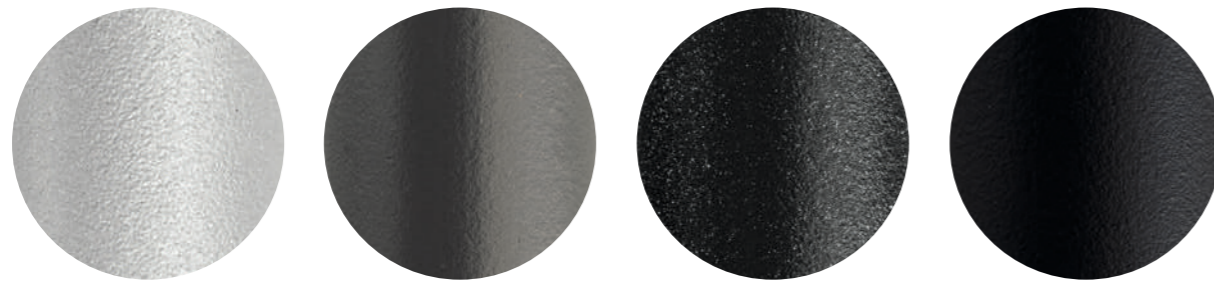
BL400E
Blue / Blu



VE100E
Sage green / Verde salvia

VE600E
Green / Verde

VE300E
Forest green / Verde bosco



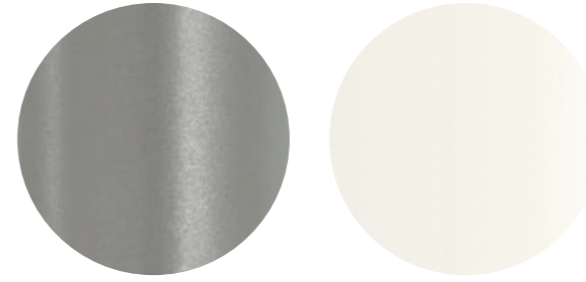
AGE
Aluminium / Alluminio

GAE
Anthracite grey / Grigio antracite

GNE
Natural grey / Grigio naturale

NPE
Black / Nero

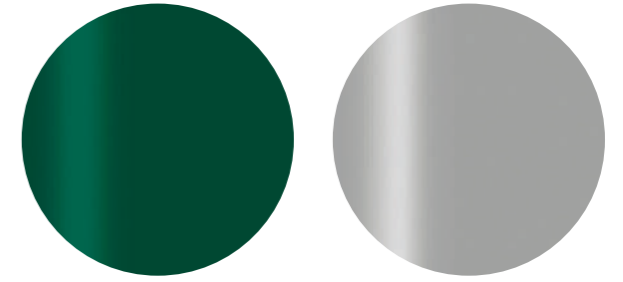
SMOOTH MATT / LISCIA OPACA



9007E
Aluminium / Alluminio

BI300E
White / Bianco

SMOOTH GLOSSY / LISCIA LUCIDA



6005E
Green / Verde

ALE
Aluminium / Alluminio



Weights, measurements and colours are indicative. Pedrali reserves the right to modify or upgrade the products without prior notice.

Pesi, dimensioni e colori sono indicativi. Pedrali si riserva la facoltà di apportare modifiche o migliorie senza alcun preavviso.

Industrial property right | Diritto di proprietà industriale

The contents of the present catalogue such as, by way of example, the works, the images, the pictures, the documents, the drawings, the forms, the logos and all other materials, published in any format, are worldwide protected by copyrights and any other industrial intellectual property right of Pedrali.

I contenuti del presente catalogo, quali, a titolo esemplificativo, le opere, le immagini, le fotografie, i documenti, i disegni, le figure, i loghi ed ogni altro materiale, in qualsiasi formato, pubblicato sono protetti a livello mondiale dal diritto d'autore e da ogni altro diritto di proprietà intellettuale di PEDRALI.