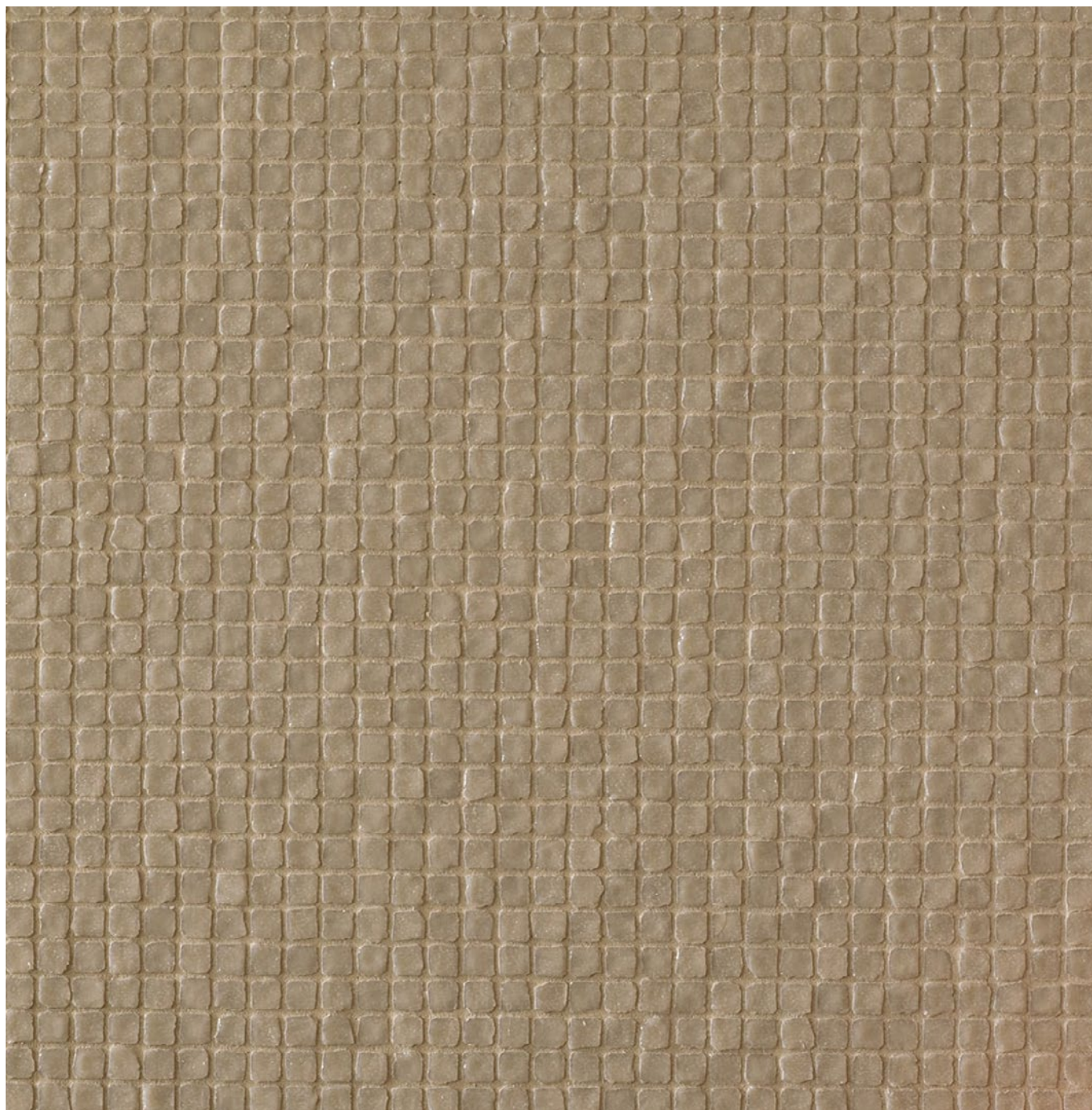


Mutina

Déchirer
by Patricia Urquiola



Déchirer Glass



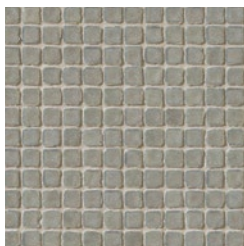
Colors



Glass Bianco



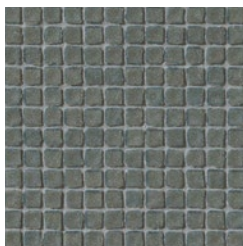
grout: bianco 50



Glass Grigio



grout: grigio 44



Glass Piombo



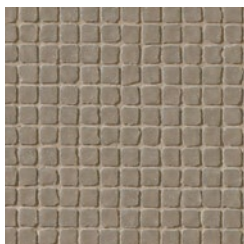
grout: piombo 53



Glass Nero



grout: nero 06



Glass Ecrù



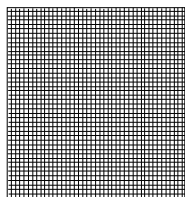
grout: ecrù 52

Déchirer Glass

General information

collection	Déchirer
design	Patricia Urquiola, 2009
production	Artisanal
material	Recycled glass mosaic
thickness	4,5 mm
nominal sizes	0,9-0,9 cm su rete 30-30 cm (on net 12".12")
specification	The collection is: – 5 base colors
category	–

GLASS



0,9-0,9 cm su rete 30-30 cm
on net 12".12"

Laying and maintenance tips

use	Floor, wall – indoor, outdoor.
installation	Lay on perfectly flat, dry walls.
recommended adhesive	Cement-based or epoxy adhesive for vitreous glass mosaics. Use with a fine-tooth spatula, max. height 3 mm. Use white adhesive on WHITE tiles. Use grey adhesive on OTHER COLOURS.
recommended joints	Place the sheets with the same joint as within the sheet. WAIT UNTIL THE ADHESIVE HAS DRIED COMPLETELY BEFORE REMOVING THE ADHESIVE FILM (at least 72 hours if cement-based adhesive is used).
recommended fillers	Cement-based grout / epoxy grout. Remove all traces of grout carefully before it dries completely. Shade-on-shade grout is recommended.
cleaning at the end of installation	CEMENT-BASED GROUT: Buffered acid (e.g. DETERDEK PRO by FILA, or similar). Wet the floor with water, dilute the product 1:5 with water and pour it on the floor. Wait for 2 or 3 minutes then use a white scotch brite pad and rinse well with clean water. EPOXY GROUT: Alkaline detergent (e.g. FILA CR10 by FILA). FILA CR10: apply pure, wait for 30 minutes then use a green scotch brite pad. SILICONE: Solvent for silicone (e.g. FILA ZERO SIL). Pour it straight onto the stain, wait for 20 minutes and remove the mark using scotch brite. PAINT: Can usually be removed using water, but if resin-based paints or particular enamels have been used, it is best to ask the manufacturer which solvent is most suitable. RUST: stain remover es. FILA NO RUST. Apply the product onto the stain, leave for 15 minutes, remove the residue and rinse thoroughly.
general cleaning (installed tiles)	You are recommended to use ordinary neutral detergent diluted in water. Avoid using acid or alkaline products, waxes and/or impregnants. During ordinary cleaning it is recommended to use extremely abrasive items (such as scourers and iron or steel sponges) as little as possible. This recommendation must be adhered to rigorously in the case of tiles with a glossy surface finishing as they are more susceptible to the risk of scuffs, scratches and loss of shine, etc. In the event of heavy dirt or particularly textured surfaces, use an alkaline detergent and rinse after washing. For large surfaces, the use of a floor washing machine is recommended. During every-day cleaning procedures, it is necessary to remember that certain types of dirt (dust, sand) increase the abrasive effect of foot-traffic. Therefore we recommend that you avoid bringing in this type of dirt, which comes in from the outside, by placing a door-mat at the entrance.
calibers (real size)	–