

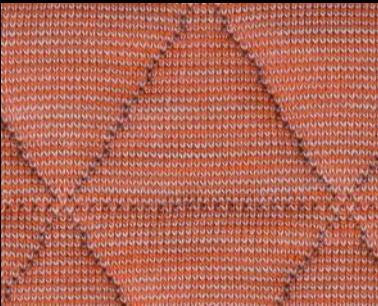


banana

# Triangle

cat. Special

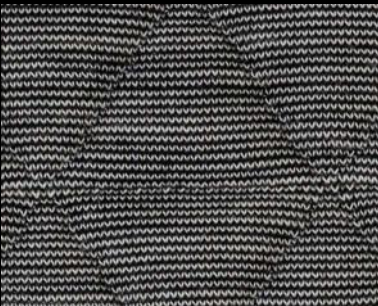
17% wool - 5% polyamide - 13% polyester -  
65% polyester filling  
Flame retardant - 60.000 Martindale



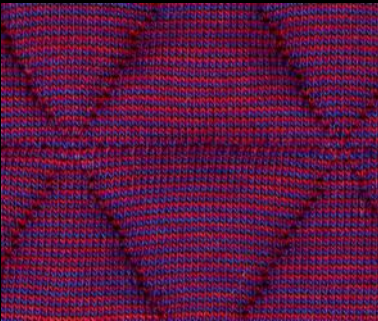
blush



oase



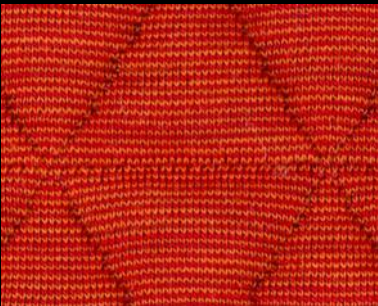
chalk



blueberry



pebble



flame



hydro



brownie



smoke



rumba



swamp



charcoal



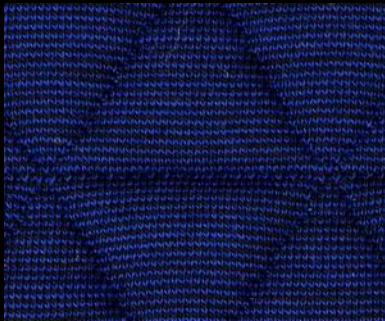
ice



copper



violet



saffier



Technical details

Composition	17% wool - 5% polyamide - 13% polyester - 65% polyester filling
Weight	Gr./m² 875
Abrasion test	Martindale - ISO 12947-2: 60.000 rubs
Lightfastness	ISO 105-B02: 7
Pilling	ISO 12945-2: 4/5
Fastness to rubbing	ISO 105-X12: Wet 4 Dry 4
Flame retardant	EN 1021-1/2 cigarette & match BS 5852 part 1 cigarette & match DIN 4102-B2 surface ignition US Cal. Tech. Bull. 117
Features	Stretch material
Environment	Oeko-Tex 100 certified Ecologically produced in Europe